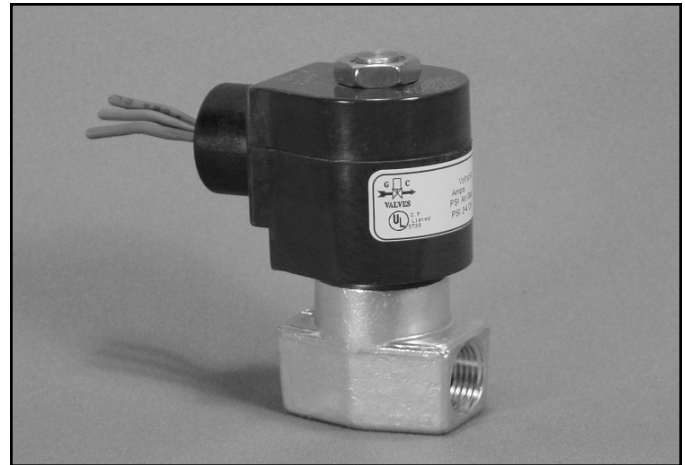


3/8" NPT Brass Body 2-Way Direct Acting Normally Closed



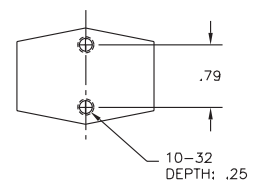
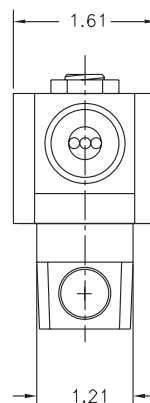
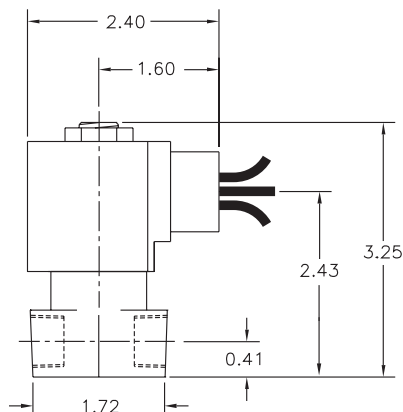
| | | |
|-----------------------|-----------------------|---|
| Materials | Seals: | Nitrile, Viton®, Ethylene Propylene, Teflon®, Rulon |
| | Orifice: | Stainless Steel |
| Electrical | Standard Housing: | Encapsulated Waterproof Conduit (NEMA 4/4X) |
| | Optional Housings: | Metallic Conduit, Explosion-proof (NEMA 7), Grommet, Open Frame, Junction Box (single or dual knockouts), DIN; Contact GC Valves Customer Service for others. |
| | Standard Voltages: | 24, 120, 240 AC 60 Hz; 50 Hz available 6, 12, 24 DC; Contact GC Valves Customer Service for Additional Voltages. |
| | Voltage Tolerance: | ±10% of applicable voltage |
| | Coil Classes: | F, H, N |
| | Standard Lead Length: | 24 inch |
| Operating Temperature | Ambient (Nominal): | 32°F to 125°F |
| Mounting | Position: | Any |
| Approvals* | Agency: | UL Safety Shut-off, UL Listed, UL Recognized, CSA Approved, FM Certified |

* Not available for all variations

© Registered Trademark of DuPont Co.

Dimensions/Weight

Weight (lbs.)
1.3



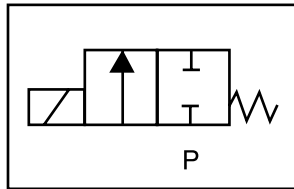
GC Valves Customer Service: 800-828-0484 (7:30am to 4pm ET) or 800-582-4232 (7:30am to 4pm PT)



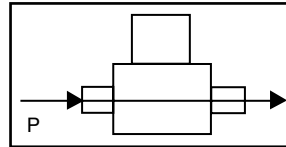
S301 – 3/8" NPT, Brass Body, Normally Closed

Valve Selection List

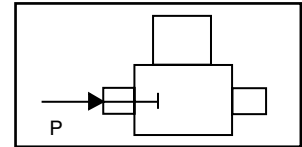
Normally Closed



Energized



De-Energized



| Pipe Size NPT | Orifice Size in. | C _v | Minimum | Operating Pressure Differential (psi) | | | | | | | | Max Fluid Temp. °F | Seal Material | Power Consumption (Watts) | | Model Code (120V/60HZ — 110V/50HZ Shown) |
|------------------|---------------------|----------------|---------|---------------------------------------|-----|-------|-----|-----------|-----|--------|------|--------------------------|---------------|---------------------------------|----|--|
| | | | | Maximum | | | | | | | | | | AC | DC | |
| | | | | Air/Gas | | Water | | Light Oil | | Steam* | | | | | | |
| | | | | AC | DC | AC | DC | AC | DC | AC | DC | | | | | |
| 3/8 | 1/8 | .36 | 0 | 200 | 140 | 200 | 140 | — | — | 150* | 140* | 295 | EPR | 10 | 10 | S301GF02C9CD5 |
| | 3/16 | .65 | 0 | 100 | 70 | 100 | 70 | — | — | 100* | 70* | 295 | EPR | 10 | 10 | S301GF02C9CE1 |
| | 1/4 | .85 | 0 | 50 | 20 | 50 | 20 | — | — | 50* | 20* | 295 | EPR | 10 | 10 | S301GF02C9BE7 |
| | 9/32 | 1.0 | 0 | 35 | 15 | 35 | 15 | — | — | 35* | 15* | 295 | EPR | 10 | 10 | S301GF02C9CF1 |
| | 3/8 | 1.3 | 0 | 20 | 5 | 20 | 5 | — | — | 20* | 5* | 295 | EPR | 10 | 10 | S301GF02C9CF5 |
| 3/8 | 1/8 | .36 | 0 | 200 | 140 | 200 | 140 | 200 | 140 | — | — | 180 | Nitrile | 10 | 10 | S301GF02N9CD5 |
| | 3/16 | .65 | 0 | 100 | 70 | 100 | 70 | 100 | 70 | — | — | 180 | Nitrile | 10 | 10 | S301GF02N9CE1 |
| | 1/4 | .85 | 0 | 50 | 20 | 50 | 20 | 50 | 20 | — | — | 180 | Nitrile | 10 | 10 | S301GF02N9BE7 |
| | 9/32 | 1.0 | 0 | 35 | 15 | 35 | 15 | 35 | 15 | — | — | 180 | Nitrile | 10 | 10 | S301GF02N9CF1 |
| | 3/8 | 1.3 | 0 | 20 | 5 | 20 | 5 | 20 | 5 | — | — | 180 | Nitrile | 10 | 10 | S301GF02N9CF5 |
| 3/8 | 1/8 | .36 | 0 | 200 | 140 | 200 | 140 | 200 | 140 | — | — | 230 | Viton | 10 | 10 | S301GF02V9CD5 |
| | 3/16 | .65 | 0 | 100 | 70 | 100 | 70 | 100 | 70 | — | — | 230 | Viton | 10 | 10 | S301GF02V9CE1 |
| | 1/4 | .85 | 0 | 50 | 20 | 50 | 20 | 50 | 20 | — | — | 230 | Viton | 10 | 10 | S301GF02V9BE7 |
| | 9/32 | 1.0 | 0 | 35 | 15 | 35 | 15 | 35 | 15 | — | — | 230 | Viton | 10 | 10 | S301GF02V9CF1 |
| | 3/8 | 1.3 | 0 | 20 | 5 | 20 | 5 | 20 | 5 | — | — | 230 | Viton | 10 | 10 | S301GF02V9CF5 |
| 3/8 | 1/8 | .36 | 0 | 200 | 140 | 200 | 140 | 200 | 140 | 150* | 140* | 366 | Rulon | 10 | 10 | S301GF02R9CD5 |
| | 3/16 | .65 | 0 | 100 | 70 | 100 | 70 | 100 | 70 | 100* | 70* | 366 | Rulon | 10 | 10 | S301GF02R9CE1 |
| | 1/4 | .85 | 0 | 50 | 20 | 50 | 20 | 50 | 20 | 50* | 20* | 366 | Rulon | 10 | 10 | S301GF02R9BE7 |
| | 9/32 | 1.0 | 0 | 35 | 15 | 35 | 15 | 35 | 15 | 35* | 15* | 366 | Rulon | 10 | 10 | S301GF02R9CF1 |
| | 3/8 | 1.3 | 0 | 20 | 5 | 20 | 5 | 20 | 5 | 20* | 5* | 366 | Rulon | 10 | 10 | S301GF02R9CF5 |
| 3/8 | 1/8 | .36 | 0 | 200 | 140 | 200 | 140 | 200 | 140 | 150* | 140* | 366 | Teflon | 10 | 10 | S301GF02T9CD5 |
| | 3/16 | .65 | 0 | 100 | 70 | 100 | 70 | 100 | 70 | 100* | 70* | 366 | Teflon | 10 | 10 | S301GF02T9CE1 |
| | 1/4 | .85 | 0 | 50 | 20 | 50 | 20 | 50 | 20 | 50* | 20* | 366 | Teflon | 10 | 10 | S301GF02T9BE7 |
| | 9/32 | 1.0 | 0 | 35 | 15 | 35 | 15 | 35 | 15 | 35* | 15* | 366 | Teflon | 10 | 10 | S301GF02T9CF1 |
| | 3/8 | 1.3 | 0 | 20 | 5 | 20 | 5 | 20 | 5 | 20* | 5* | 366 | Teflon | 10 | 10 | S301GF02T9CF5 |

* Class H Coil Recommended for Steam and Other High Temperature Applications

GC Valves Customer Service: 800-828-0484 (7:30am to 4pm ET) or 800-582-4232 (7:30am to 4pm PT)

S301 – 3/8" NPT, Brass Body, Normally Closed



Part Numbering

| | | | | | | | | | | | | |
|--|----------|----------|--------------------|------------|--------------------------|----------------------|----------|---|-----------------|-----------------|---|----------|
| 1 | 2 | 3 | 4 | 5 | 6 | 7 | 8 | 9 | 10 | 11 | 12 | 13 |
| S | 3 | 0 | 1 | G | F | 0 | 2 | C | 9 | C | D | 5 |
| Series | | | Operating Mode | Housing* | Coil Class* | Voltage* | | Seal Material | Body Material | Pipe Connection | Orifice Size | |
| S30 | | | 1: Normally Closed | G: Conduit | F: Class F H: Class H | 02: 120/60 110/50 | | C: EPR N: Nitrile V: Viton R: Rulon T: Teflon | 9: Forged Brass | C: 3/8" NPT | D5: 1/8" E1: 3/16" E7: 1/4" F1: 9/32" F5: 3/8"* | |
| * See the "Engineering Guide" for additional voltages, variations and options. | | | | | | | | | | | | |

*Brass

Coil Data

| Coil Family | |
|-------------|------|
| Type | Size |
| All | S4 |

| | | |
|--------------------|---------|----|
| Frequency (Hz) | 60 | 50 |
| Nominal Power (VA) | Inrush | 46 |
| | Holding | 18 |



S301 – 3/8" NPT, Brass Body, Normally Closed

This Page Intentionally Blank