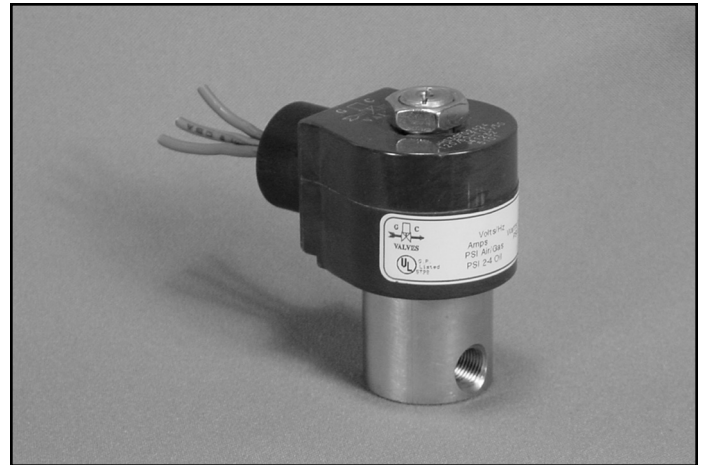


S31 Series



- 1/8" NPT
- Stainless Steel Body
- 3-Way Direct Acting
- Normally Closed
- Free Exhaust



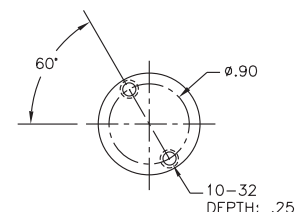
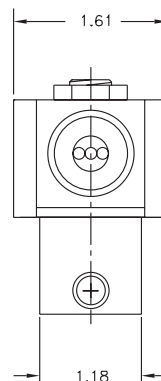
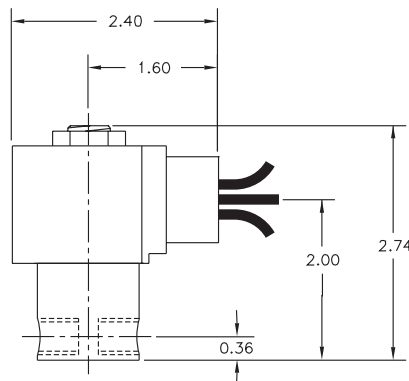
| | | |
|-----------------------|-------------------------|---|
| Materials | Seals: | Nitrile, Viton®, Ethylene Propylene or Teflon® |
| | Orifices: Pilot Main | Stainless Steel Stainless Steel |
| Electrical | Standard Housing: | Encapsulated Waterproof Conduit (NEMA 4/4X) |
| | Optional Housings: | Metallic Conduit, Explosion-proof (NEMA 7), Grommet, Open Frame, Junction Box (single or dual knockouts), DIN; Contact GC Valves Customer Service for others. |
| | Standard Voltages: | 24, 120, 240 AC 60 Hz; 50 Hz available 6, 12, 24 DC; Contact GC Valves Customer Service for Additional Voltages. |
| | Voltage Tolerance: | ±10% of applicable voltage |
| | Coil Classes: | F, H, N |
| | Standard Lead Length: | 24 inch |
| Operating Temperature | Ambient (Nominal): | 32°F to 125°F |
| Mounting | Position | Any |
| Approvals | Agency | UL Listed, UL Recognized, CSA Approved |

* Not available for all variations

© Registered Trademark of DuPont Co.

Dimensions/Weight

Weight (lbs.)
1.0



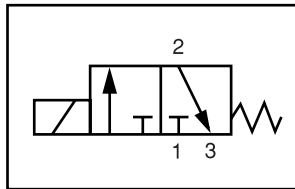
GC Valves Customer Service: 800-828-0484 (7:30am to 4pm ET) or 800-582-4232 (7:30am to 4pm PT)



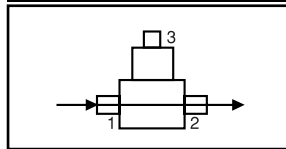
S317 – 1/8" NPT, Stainless Steel Body, Normally Closed, Free Exhaust

Valve Selection List

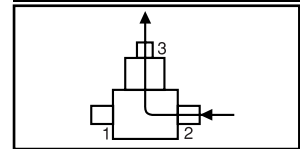
Normally Closed



Energized



De-Energized



| Pipe Size NPT | Orifice Size IN | | C _v | | Operating Pressure Differential (psi) | | | | | | Max Fluid Temp. °F | Seal Material | Power Consumption (Watts) | | Model Code (120V/60HZ — 110V/50HZ) Shown |
|------------------|-----------------|------|----------------|-----|---------------------------------------|-----|-------|-----|-----------|-----|-----------------------|---------------|---------------------------|----|--|
| | Main | Top | Main | Top | Maximum | | | | | | | | AC | DC | |
| | | | | | Air/Gas | | Water | | Light Oil | | | | | | |
| | AC | DC | AC | DC | AC | DC | AC | DC | AC | DC | | | Stainless Steel Body | | |
| 1/8 | 3/64 | 3/64 | .05 | .05 | 170 | 170 | 170 | 170 | — | — | 295 | EPR | 8 | 9 | S317GF02C2AC3 |
| | 1/64 | 1/16 | .05 | .08 | 120 | 120 | 120 | 120 | — | — | 295 | EPR | 8 | 9 | S317GF02C2AC5 |
| | 3/32 | 3/32 | .08 | .08 | 65 | 65 | 65 | 65 | — | — | 295 | EPR | 8 | 9 | S317GF02C2AC9 |
| | 1/8 | 3/32 | .30 | .05 | 40 | 40 | 40 | 40 | — | — | 295 | EPR | 8 | 9 | S317GF02C2AV3 |
| | 5/32 | 3/32 | .36 | .30 | 25 | 25 | 25 | 25 | — | — | 295 | EPR | 8 | 9 | S317GF02C2AV7 |
| 1/8 | 3/64 | 3/64 | .05 | .10 | 170 | 170 | 170 | 170 | 170 | 170 | 180 | Nitrile | 8 | 9 | S317GF02N2AC3 |
| | 1/16 | 1/16 | .08 | .10 | 120 | 120 | 120 | 120 | 120 | 120 | 180 | Nitrile | 8 | 9 | S317GF02N2AC5 |
| | 3/32 | 3/32 | .20 | .20 | 65 | 65 | 65 | 65 | 65 | 65 | 180 | Nitrile | 8 | 9 | S317GF02N2AC9 |
| | 1/8 | 3/32 | .27 | .20 | 40 | 40 | 40 | 40 | 40 | 40 | 180 | Nitrile | 8 | 9 | S317GF02N2AV3 |
| | 5/32 | 3/32 | .41 | .23 | 25 | 25 | 25 | 25 | 25 | 25 | 180 | Nitrile | 8 | 9 | S317GF02N2AV7 |
| 1/8 | 3/64 | 3/64 | .05 | .05 | 170 | 170 | 170 | 170 | 170 | 170 | 230 | Viton | 8 | 9 | S317GF02V2AC3 |
| | 1/16 | 3/32 | .05 | .08 | 120 | 120 | 120 | 120 | 120 | 120 | 230 | Viton | 8 | 9 | S317GF02V2AC5 |
| | 3/32 | 3/32 | .08 | .08 | 65 | 65 | 65 | 65 | 65 | 65 | 230 | Viton | 8 | 9 | S317GF02V2AC9 |
| | 1/8 | 3/32 | .30 | .05 | 40 | 40 | 40 | 40 | 40 | 40 | 230 | Viton | 8 | 9 | S317GF02V2AV3 |
| | 5/32 | 3/32 | .36 | .30 | 25 | 25 | 25 | 25 | 25 | 25 | 230 | Viton | 8 | 9 | S317GF02V2AV7 |
| 1/8 | 3/64 | 3/64 | .05 | .05 | 170 | 170 | 170 | 170 | 170 | 170 | 366* | Teflon | 8 | 9 | S317GF02T2AC3 |
| | 1/16 | 1/16 | .05 | .08 | 120 | 120 | 120 | 120 | 120 | 120 | 366* | Teflon | 8 | 9 | S317GF02T2AC5 |
| | 3/32 | 3/32 | .08 | .08 | 65 | 65 | 65 | 65 | 65 | 65 | 366* | Teflon | 8 | 9 | S317GF02T2AC9 |
| | 1/8 | 3/32 | .30 | .05 | 40 | 40 | 40 | 40 | 40 | 40 | 366* | Teflon | 8 | 9 | S317GF02T2AV3 |
| | 5/32 | 3/32 | .36 | .30 | 25 | 25 | 25 | 25 | 25 | 25 | 366* | Teflon | 8 | 9 | S317GF02T2AV7 |

* Class H Coil Recommended for High Temperature Applications

GC Valves Customer Service: 800-828-0484 (7:30am to 4pm ET) or 800-582-4232 (7:30am to 4pm PT)

S317 – 1/8" NPT, Stainless Steel Body, Normally Closed, Free Exhaust



Part Numbering

| | | | | | | | | | | | | |
|--|----------|----------|-----------------------------------|------------|-------------|----------------------|----------|---|--------------------|-----------------|--|----------|
| 1 | 2 | 3 | 4 | 5 | 6 | 7 | 8 | 9 | 10 | 11 | 12 | 13 |
| S | 3 | 1 | 7 | G | F | 0 | 2 | C | 2 | A | C | 3 |
| Series | | | Operating Mode | Housing* | Coil Class* | Voltage* | | Seal Material | Body Material | Pipe Connection | Orifice Size (Main x Top) | |
| S31 | | | 7: Normally Closed (Free Exhaust) | G: Conduit | F: Class F | 02: 120/60 110/50 | | C: EPR N: Nitrile V: Viton T: Teflon | 2: Stainless Steel | A: 1/8" NPT | C3: 3/64" x 3/64" C5: 1/16" x 1/16" C9: 3/32" x 3/32" V3: 1/8" x 3/32" V7: 5/32" x 3/32" | |
| * See the "Engineering Guide" for additional voltages, variations and options. | | | | | | | | | | | | |

Coil Data

| Coil Family | |
|-------------|------|
| Type | Size |
| All | S3 |

| | | |
|--------------------|---------|----|
| Frequency (Hz) | 60 | 50 |
| Nominal Power (VA) | Inrush | 36 |
| | Holding | 16 |



S317 – 1/8" NPT, Stainless Steel Body, Normally Closed, Free Exhaust

This Page Intentionally Blank