



A DEMA Engineering Company

S30 Series

- 1/8" NPT
- Stainless Steel Body
- 2-Way Direct Acting
- Normally Closed

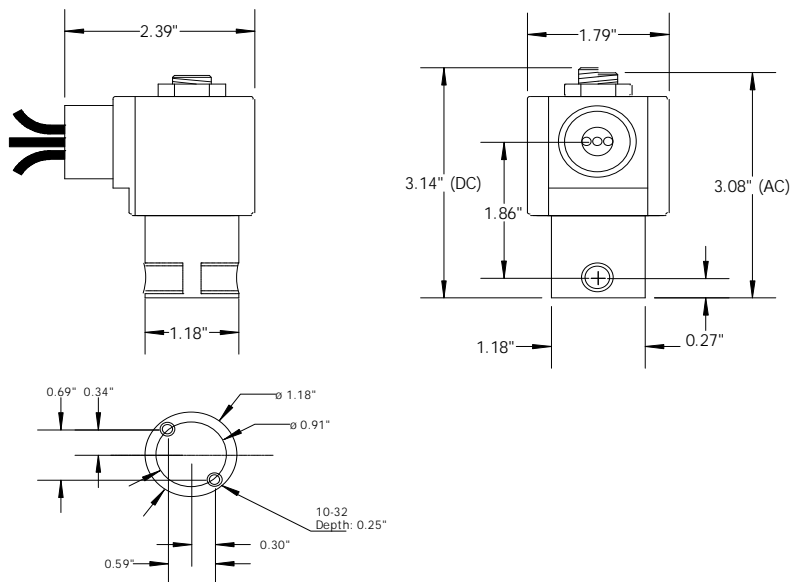


Materials	Seals:	Nitrile, FKM, Ethylene Propylene, PTFE, Rulon
	Orifice:	Stainless Steel
Electrical	Standard Housing:	Encapsulated Waterproof Conduit (NEMA 4X)
	Optional Housings:	Metal Conduit, Explosion-Proof (NEMA 7), Grommet Open Frame, Junction Box (single or dual knockouts), DIN, Contact GC Valves Customer Svc. For others.
	Standard Voltages:	24, 120, 240, AC, 60 and/or 50 Hz. Available 6, 12, 24 DC Contact GC Valves Customer Svc. For Additional Voltages
	Voltage Tolerance:	± 10% of applicable voltage
	Coil Classes:	F, H, N
	Standard Lead Length:	24 inches
Operating Temperature	Ambient (Nominal):	32° F to 125° F
Mounting	Position:	Any
Approvals*	Agency:	UL Safety, UL Listed, UL Recognized, CSA Approved

* Not available for all variations

Dimensions / Weight

Weight (Lbs.)
1.1



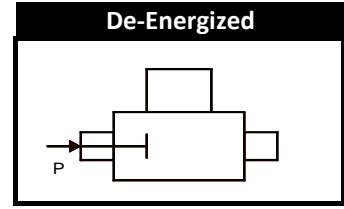
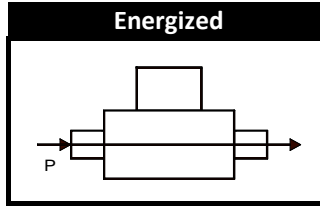
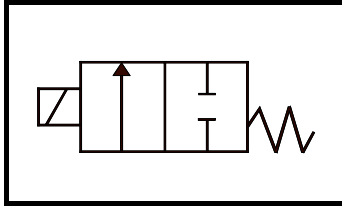
GC Valves Customer Service: 800-828-0484 (7:30 AM to 5:00 PM ET)



S301 - 1/8" NPT, Stainless Steel Body, Normally Closed

Valve Selection List

Normally Closed



Pipe Size NPT	Orifice Size In.	Cv	Operating Pressure Differential (PSI)								Max. Fluid Temp. °F	Seal Material	Power Consumption (Watts)		Model Code (120V/60HZ-110V/50HZ) Shown	
			Minimum	Maximum									AC	DC		
				Air/Gas		Water		Light Oil		Steam*						
				AC	DC	AC	DC	AC	DC	AC					DC	
1/8	1/32	.03	0	2400	2400	2400	2400	---	---	150	150	295	EPR	10	10	S301GF02C2AC1
	3/64	.05	0	1050	1000	1050	1000	---	---	150	150	295	EPR	10	10	S301GF02C2AC3
	1/16	.10	0	700	300	700	300	---	---	150	150	295	EPR	10	10	S301GF02C2AC5
	5/64	.15	0	500	240	500	240	---	---	150	150	295	EPR	10	10	S301GF02C2AC7
	3/32	.21	0	400	200	400	200	---	---	150	150	295	EPR	10	10	S301GF02C2AC9
	7/64	.29	0	350	170	350	170	---	---	150	150	295	EPR	10	10	S301GF02C2AD3
	1/8	.36	0	200	140	200	140	---	---	150	140	295	EPR	10	10	S301GF02C2AD5
	5/32	.44	0	150	100	150	100	---	---	150	100	295	EPR	10	10	S301GF02C2AD7
	3/16	.65	0	100	70	100	70	---	---	100	70	295	EPR	10	10	S301GF02C2AE1
	1/4	.85	0	50	20	50	20	---	---	50	20	295	EPR	10	10	S301GF02C2AE7
9/32	1.0	0	35	15	35	15	---	---	35	15	295	EPR	10	10	S301GF02C2AF1	
1/8	1/32	.03	0	2400	2400	2400	2400	2400	2400	---	---	180	Nitrile	10	10	S301GF02N2AC1
	3/64	.05	0	1050	1000	1050	1000	1050	1000	---	---	180	Nitrile	10	10	S301GF02N2AC3
	1/16	.10	0	700	300	700	300	700	300	---	---	180	Nitrile	10	10	S301GF02N2AC5
	5/64	.15	0	500	240	500	240	500	240	---	---	180	Nitrile	10	10	S301GF02N2AC7
	3/32	.21	0	400	200	400	200	400	200	---	---	180	Nitrile	10	10	S301GF02N2AC9
	7/64	.29	0	350	170	350	170	350	170	---	---	180	Nitrile	10	10	S301GF02N2AD3
	1/8	.36	0	200	140	200	140	200	140	---	---	180	Nitrile	10	10	S301GF02N2AD5
	5/32	.44	0	150	100	150	100	150	100	---	---	180	Nitrile	10	10	S301GF02N2AD7
	3/16	.65	0	100	70	100	70	100	70	---	---	180	Nitrile	10	10	S301GF02N2AE1
	1/4	.85	0	50	20	50	20	50	20	---	---	180	Nitrile	10	10	S301GF02N2AE7
9/32	1.0	0	35	15	35	15	35	15	---	---	180	Nitrile	10	10	S301GF02N2AF1	
1/8	1/32	.03	0	2400	2400	2400	2400	2400	2400	---	---	230	FKM	10	10	S301GF02V2AC1
	3/64	.05	0	1050	1000	1050	1000	1050	1000	---	---	230	FKM	10	10	S301GF02V2AC3
	1/16	.10	0	700	300	700	300	700	300	---	---	230	FKM	10	10	S301GF02V2AC5
	5/64	.15	0	500	240	500	240	500	240	---	---	230	FKM	10	10	S301GF02V2AC7
	3/32	.21	0	400	200	400	200	400	200	---	---	230	FKM	10	10	S301GF02V2AC9
	7/64	.29	0	350	170	350	170	350	170	---	---	230	FKM	10	10	S301GF02V2AD3
	1/8	.36	0	200	140	200	140	200	140	---	---	230	FKM	10	10	S301GF02V2AD5
	5/32	.44	0	150	100	150	100	150	100	---	---	230	FKM	10	10	S301GF02V2AD7
	3/16	.65	0	100	70	100	70	100	70	---	---	230	FKM	10	10	S301GF02V2AE1
	1/4	.85	0	50	20	50	20	50	20	---	---	230	FKM	10	10	S301GF02V2AE7
9/32	1.0	0	35	15	35	15	35	15	---	---	230	FKM	10	10	S301GF02V2AF1	

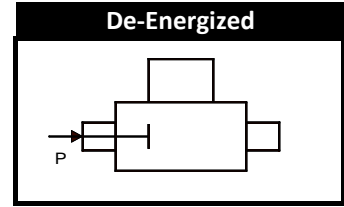
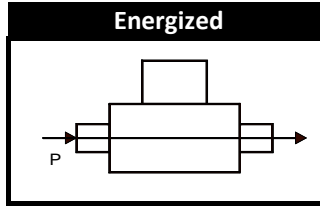
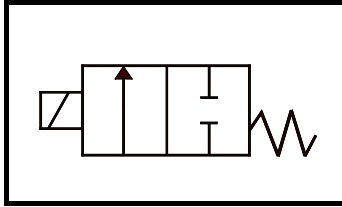
GC Valves Customer Service: 800-828-0484 (7:30 AM to 5:00 PM ET)



S301 - 1/8" NPT, Stainless Steel Body, Normally Closed

Valve Selection List

Normally Closed



Pipe Size NPT	Orifice Size In.	Cv	Operating Pressure Differential (PSI)								Max. Fluid Temp. °F	Seal Material	Power Consumption (Watts)		Model Code (120V/60HZ-110V/50HZ) Shown	
			Minimum	Maximum									AC	DC		Stainless Steel Body
				Air/Gas		Water		Light Oil		Steam*						
				AC	DC	AC	DC	AC	DC	AC					DC	
1/8	1/32	.03	0	2400	2400	2400	2400	2400	2400	150	150	366	Rulon	10	10	S301GF02R2AC1
	3/64	.05	0	1050	1000	1050	1000	1050	1000	150	150	366	Rulon	10	10	S301GF02R2AC3
	1/16	.10	0	700	300	700	300	700	300	150	150	366	Rulon	10	10	S301GF02R2AC5
	5/64	.15	0	500	240	500	240	500	240	150	150	366	Rulon	10	10	S301GF02R2AC7
	3/32	.21	0	400	200	400	200	400	200	150	150	366	Rulon	10	10	S301GF02R2AC9
	7/64	.29	0	350	170	350	170	350	170	150	150	366	Rulon	10	10	S301GF02R2AD3
	1/8	.36	0	200	140	200	140	200	140	150	140	366	Rulon	10	10	S301GF02R2AD5
	5/32	.44	0	150	100	150	100	150	100	150	100	366	Rulon	10	10	S301GF02R2AD7
	3/16	.65	0	100	70	100	70	100	70	100	70	366	Rulon	10	10	S301GF02R2AE1
	1/4	.85	0	50	20	50	20	50	20	50	20	366	Rulon	10	10	S301GF02R2AE7
9/32	1.0	0	35	15	35	15	35	15	35	15	366	Rulon	10	10	S301GF02R2AF1	
1/8	1/32	.03	0	2400	2400	2400	2400	2400	2400	150	150	366	PTFE	10	10	S301GF02T2AC1
	3/64	.05	0	1050	1000	1050	1000	1050	1000	150	150	366	PTFE	10	10	S301GF02T2AC3
	1/16	.10	0	700	300	700	300	700	300	150	150	366	PTFE	10	10	S301GF02T2AC5
	5/64	.15	0	500	240	500	240	500	240	150	150	366	PTFE	10	10	S301GF02T2AC7
	3/32	.21	0	400	200	400	200	400	200	150	150	366	PTFE	10	10	S301GF02T2AC9
	7/64	.29	0	350	170	350	170	350	170	150	150	366	PTFE	10	10	S301GF02T2AD3
	1/8	.36	0	200	140	200	140	200	140	150	140	366	PTFE	10	10	S301GF02T2AD5
	5/32	.44	0	150	100	150	100	150	100	150	100	366	PTFE	10	10	S301GF02T2AD7
	3/16	.65	0	100	70	100	70	100	70	100	70	366	PTFE	10	10	S301GF02T2AE1
	1/4	.85	0	50	20	50	20	50	20	50	20	366	PTFE	10	10	S301GF02T2AE7
9/32	1.0	0	35	15	35	15	35	15	35	15	366	PTFE	10	10	S301GF02T2AF1	

GC Valves Customer Service: 800-828-0484 (7:30 AM to 5:00 PM ET)



S301 - 1/8" NPT, Stainless Steel Body, Normally Closed

Part Numbering

1	2	3	4	5	6	7	8	9	10	11	12	13
S	3	0	1	G	F	0	2	C	2	A	C	1
Series			Operating Mode	Housing*	Coil Class*	Voltage*		Seal Material	Body Material	Pipe Connection	Orifice Size	
S30			1: Normally Closed	G: Conduit	F: Class F H: Class H N: Class N	02: 120/60, 110/50		C: EPR V: FKM R: Rulon T: PTFE	2: Stainless Steel	A: 1/8" NPT	C1: 1/32" C3: 3/64" C5: 1/16" C7: 5/64" C9: 3/32" D5: 1/8" D7: 5/32" E1: 3/16" E7: 1/4" F1: 9/32"	
* See the "Engineering Guide" for additional voltages, variations and options.												

Coil Data

Coil Family	
Type	Size
All	S4

Frequency (Hz)	60	50
Nominal Power (VA)	Inrush	46
	Holding	18

GC Valves Customer Service: 800-828-0484 (7:30 AM to 5:00 PM ET)