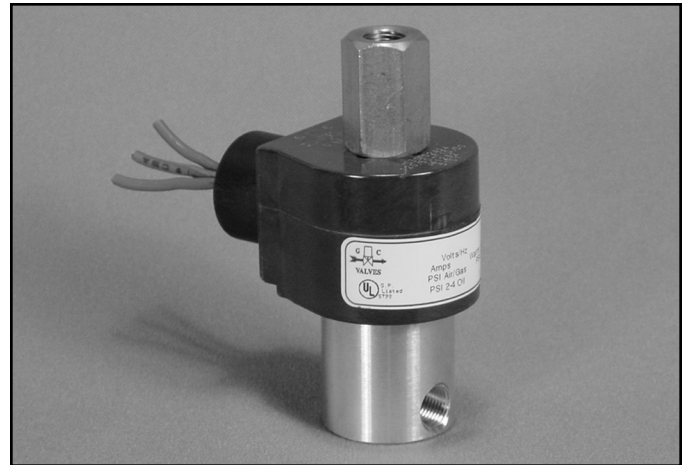


# S31 Series



- 1/8" NPT
- Brass Body
- 3-Way Direct Acting
- Normally Open



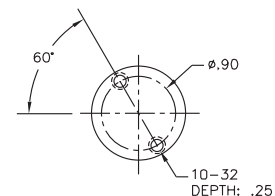
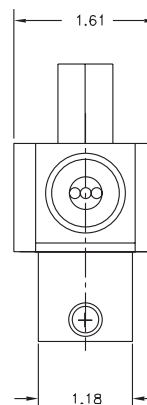
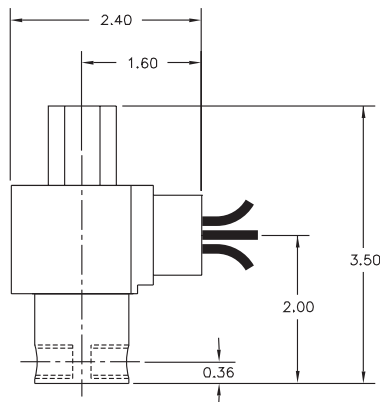
|                       |                            |                                                                                                                                                               |
|-----------------------|----------------------------|---------------------------------------------------------------------------------------------------------------------------------------------------------------|
| Materials             | Seals:                     | Nitrile, Viton®, Ethylene Propylene or Teflon®                                                                                                                |
|                       | Orifices:      Top<br>Main | Stainless Steel<br>Stainless Steel                                                                                                                            |
| Electrical            | Standard Housing:          | Encapsulated Waterproof Conduit (NEMA 4/4X)                                                                                                                   |
|                       | Optional Housings:         | Metallic Conduit, Explosion-proof (NEMA 7), Grommet, Open Frame, Junction Box (single or dual knockouts), DIN; Contact GC Valves Customer Service for others. |
|                       | Standard Voltages:         | 24, 120, 240 AC 60 Hz; 50 Hz available<br>6, 12, 24 DC;<br>Contact GC Valves Customer Service for Additional Voltages.                                        |
|                       | Voltage Tolerance:         | ±10% of applicable voltage                                                                                                                                    |
|                       | Coil Classes:              | F, H, N                                                                                                                                                       |
|                       | Standard Lead Length:      | 24 inch                                                                                                                                                       |
| Operating Temperature | Ambient (Nominal):         | 32° to 125°F                                                                                                                                                  |
| Mounting              | Position                   | Any                                                                                                                                                           |
| Approvals*            | Agency                     | UL Listed, UL Recognized, CSA Approved                                                                                                                        |

\* Not available for all variations

® Registered Trademark of DuPont Co.

## Dimensions/Weight

|                      |
|----------------------|
| <b>Weight (lbs.)</b> |
| 1.0                  |



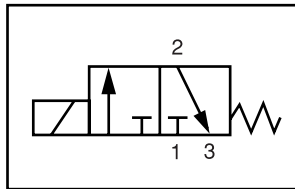
GC Valves Customer Service: 800-828-0484 (7:30am to 4pm ET) or 800-582-4232 (7:30am to 4pm PT)



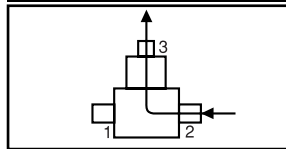
# S314 – 1/8" NPT, Brass Body, Normally Open

## Valve Selection List

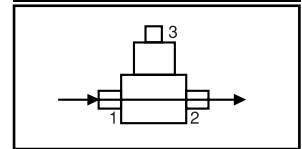
Normally Open



Energized



De-Energized



| Pipe Size<br>NPT | Orifice Size IN |      | C <sub>v</sub> |     | Operating Pressure Differential (psi) |     |       |     |           |     | Max Fluid Temp.<br>°F | Seal Material | Power Consumption (Watts) |    | Model Code<br>( 120V/60HZ — 110V/50HZ<br>Shown ) |
|------------------|-----------------|------|----------------|-----|---------------------------------------|-----|-------|-----|-----------|-----|-----------------------|---------------|---------------------------|----|--------------------------------------------------|
|                  | Main            | Top  | Main           | Top | Maximum                               |     |       |     |           |     |                       |               | AC                        | DC |                                                  |
|                  |                 |      |                |     | Air/Gas                               |     | Water |     | Light Oil |     |                       |               |                           |    |                                                  |
|                  |                 |      |                |     | AC                                    | DC  | AC    | DC  | AC        | DC  |                       |               |                           |    |                                                  |
| 1/8              | 3/64            | 3/64 | .05            | .05 | 150                                   | 150 | 150   | 150 | —         | —   | 295                   | EPR           | 8                         | 9  | S314GF02C8AC3                                    |
|                  | 3/32            | 1/16 | .20            | .10 | 80                                    | 80  | 80    | 80  | —         | —   | 295                   | EPR           | 8                         | 9  | S314GF02C8AW7                                    |
|                  | 3/32            | 3/32 | .20            | .20 | 45                                    | 45  | 45    | 45  | —         | —   | 295                   | EPR           | 8                         | 9  | S314GF02C8AC9                                    |
|                  | 5/32            | 3/32 | .41            | .20 | 30                                    | 15  | 30    | 15  | —         | —   | 295                   | EPR           | 8                         | 9  | S314GF02C8AV9                                    |
| 1/8              | 3/64            | 3/64 | .05            | .05 | 150                                   | 150 | 150   | 150 | 150       | 150 | 180                   | Nitrile       | 8                         | 9  | S314GF02N8AC3                                    |
|                  | 3/32            | 1/16 | .20            | .20 | 80                                    | 80  | 80    | 80  | 80        | 80  | 180                   | Nitrile       | 8                         | 9  | S314GF02N8AW7                                    |
|                  | 3/32            | 3/32 | .20            | .20 | 45                                    | 45  | 45    | 45  | 45        | 45  | 180                   | Nitrile       | 8                         | 9  | S314GF02N8AC9                                    |
|                  | 5/32            | 3/32 | .41            | .20 | 30                                    | 15  | 30    | 15  | 30        | 15  | 180                   | Nitrile       | 8                         | 9  | S314GF02N8AV9                                    |
| 1/8              | 3/64            | 3/64 | .05            | .05 | 150                                   | 150 | 150   | 150 | 150       | 150 | 230                   | Viton         | 8                         | 9  | S314GF02V8AC3                                    |
|                  | 3/32            | 1/16 | .20            | .10 | 80                                    | 80  | 80    | 80  | 80        | 80  | 230                   | Viton         | 8                         | 9  | S314GF02V8AW7                                    |
|                  | 3/32            | 3/32 | .20            | .20 | 45                                    | 45  | 45    | 45  | 45        | 45  | 230                   | Viton         | 8                         | 9  | S314GF02V8AC9                                    |
|                  | 5/32            | 3/32 | .41            | .20 | 30                                    | 15  | 30    | 15  | 30        | 15  | 230                   | Viton         | 8                         | 9  | S314GF02V8AV9                                    |
| 1/8              | 3/64            | 3/64 | .05            | .05 | 150                                   | 150 | 150   | 150 | 150       | 150 | 366*                  | Teflon        | 8                         | 9  | S314GF02T8AC3                                    |
|                  | 3/32            | 1/16 | .20            | .10 | 80                                    | 80  | 80    | 80  | 80        | 80  | 366*                  | Teflon        | 8                         | 9  | S314GF02T8AW7                                    |
|                  | 3/32            | 3/32 | .20            | .20 | 45                                    | 45  | 45    | 45  | 45        | 45  | 366*                  | Teflon        | 8                         | 9  | S314GF02T8AC9                                    |
|                  | 5/32            | 3/32 | .41            | .10 | 30                                    | 15  | 30    | 15  | 30        | 15  | 366*                  | Teflon        | 8                         | 9  | S314GF02T8AV9                                    |

\* Class H Coil Recommended for High Temperature Applications

# S314 – 1/8" NPT, Brass Body, Normally Open



## Part Numbering

|                                                                                |          |          |                  |            |             |                      |          |                                               |               |                 |                                                                                  |          |
|--------------------------------------------------------------------------------|----------|----------|------------------|------------|-------------|----------------------|----------|-----------------------------------------------|---------------|-----------------|----------------------------------------------------------------------------------|----------|
| 1                                                                              | 2        | 3        | 4                | 5          | 6           | 7                    | 8        | 9                                             | 10            | 11              | 12                                                                               | 13       |
| <b>S</b>                                                                       | <b>3</b> | <b>1</b> | <b>4</b>         | <b>G</b>   | <b>F</b>    | <b>0</b>             | <b>2</b> | <b>C</b>                                      | <b>8</b>      | <b>A</b>        | <b>C</b>                                                                         | <b>3</b> |
| Series                                                                         |          |          | Operating Mode   | Housing*   | Coil Class* | Voltage*             |          | Seal Material                                 | Body Material | Pipe Connection | Orifice Size (Main x Top)                                                        |          |
| S31                                                                            |          |          | 4: Normally Open | G: Conduit | F: Class F  | 02: 120/60<br>110/50 |          | C: EPR<br>N: Nitrile<br>V: Viton<br>T: Teflon | 8: Brass      | A: 1/8" NPT     | C3: 3/64" x 3/64"<br>W7: 3/32" x 1/16"<br>C9: 3/32" x 3/32"<br>V9: 5/32" x 3/32" |          |
| * See the "Engineering Guide" for additional voltages, variations and options. |          |          |                  |            |             |                      |          |                                               |               |                 |                                                                                  |          |

## Coil Data

| Coil Family |      |
|-------------|------|
| Type        | Size |
| All         | S3   |

|                    |         |    |
|--------------------|---------|----|
| Frequency (Hz)     | 60      | 50 |
| Nominal Power (VA) | Inrush  | 36 |
|                    | Holding | 16 |



## **S314 – 1/8" NPT, Brass Body, Normally Open**

**This Page Intentionally Blank**