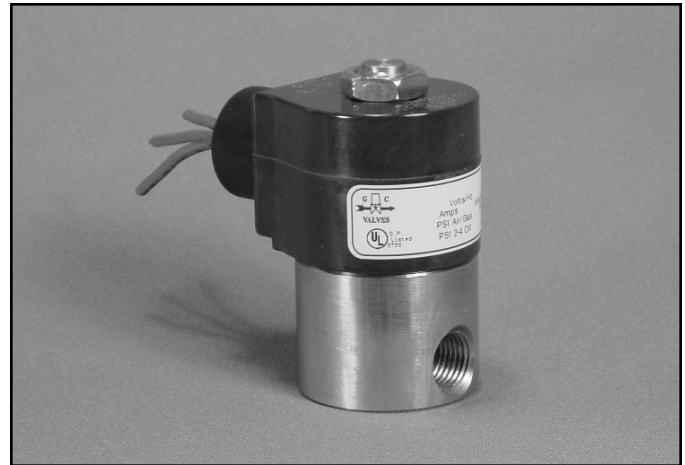


1/4" NPT Stainless Steel Body 2-Way Direct Acting Normally Closed



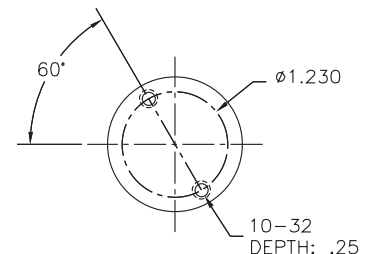
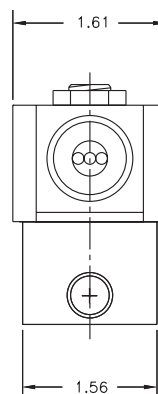
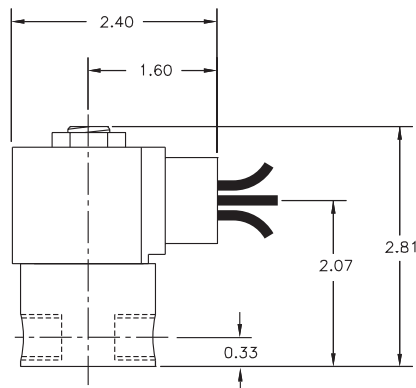
Materials	Seals:	Nitrile, Viton®, Ethylene Propylene, Teflon®, Rulon
	Orifice:	Stainless Steel
Electrical	Standard Housing:	Encapsulated Waterproof Conduit (NEMA 4/4X)
	Optional Housings:	Metallic Conduit, Explosion-proof (NEMA 7), Grommet, Open Frame, Junction Box (single or dual knockouts), DIN; Contact GC Valves Customer Service for others.
	Standard Voltages:	24, 120, 240 AC 60 Hz; 50 Hz available 6, 12, 24 DC; Contact GC Valves Customer Service for Additional Voltages.
	Voltage Tolerance:	±10% of applicable voltage
	Coil Classes:	F, H, N
	Standard Lead Length:	24 inch
Operating Temperature	Ambient (Nominal):	32°F to 125°F
Mounting	Position:	Any
Approvals*	Agency:	UL Safety Shutoff, UL Listed, UL Recognized, CSA Approved, FM Certified

* Not available for all variations

© Registered Trademark of DuPont Co.

Dimensions/Weight

Weight (lbs.)
1.1



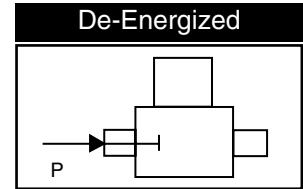
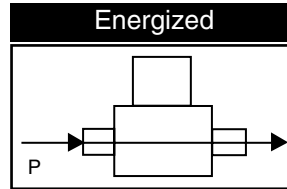
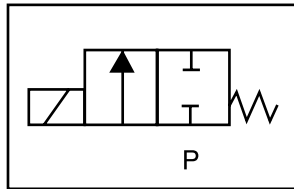
GC Valves Customer Service: 800-828-0484 (7:30am to 4pm ET) or 800-582-4232 (7:30am to 4pm PT)



S311 – 1/4" NPT, Stainless Steel Body, Normally Closed

Valve Selection List

Normally Closed



Pipe Size NPT	Orifice Size in.	C _v	Minimum	Operating Pressure Differential (psi)								Max Fluid Temp. °F	Seal Material	Power Consumption (Watts)		Model Code (120V/60HZ — 110V/50HZ Shown)
				Maximum										AC	DC	
				Air/Gas		Water		Light Oil		Steam*						
				AC	DC	AC	DC	AC	DC	AC	DC					
1/4	1/32	.03	0	2000	2000	2000	2000	—	—	150*	150*	295	EPR	8	9	S311GF02C3BC1
	3/64	.05	0	770	420	770	420	—	—	150*	150*	295	EPR	8	9	S311GF02C3BC3
	1/16	.10	0	560	185	560	185	—	—	150*	150*	295	EPR	8	9	S311GF02C3BC5
	5/64	.15	0	400	150	400	150	—	—	150*	150*	295	EPR	8	9	S311GF02C3BC7
	3/32	.21	0	300	130	300	130	—	—	150*	130*	295	EPR	8	9	S311GF02C3BC9
	7/64	.14	0	210	90	210	90	—	—	150*	90*	295	EPR	8	9	S311GF02C3BD3
	1/8	.32	0	155	60	155	60	—	—	150*	60*	295	EPR	8	9	S311GF02C3BD5
	5/32	.43	0	105	35	105	35	—	—	105*	35*	295	EPR	8	9	S311GF02C3BD7
	3/16	.49	0	75	20	75	20	—	—	75*	20*	295	EPR	8	9	S311GF02C3BE1
	1/4	.85	0	50	20	50	20	—	—	50*	20*	295	EPR	8	9	S311GF02C3BE7
9/32	1.0	0	35	15	35	15	—	—	35*	15*	295	EPR	8	9	S311GF02C3BF1	
1/4	1/32	.03	0	2000	2000	2000	2000	2000	2000	—	—	180	Nitrile	8	9	S311GF02N3BC1
	3/64	.05	0	770	420	770	420	770	420	—	—	180	Nitrile	8	9	S311GF02N3BC3
	1/16	.10	0	560	185	560	185	560	185	—	—	180	Nitrile	8	9	S311GF02N3BC5
	5/64	.15	0	400	150	400	150	400	150	—	—	180	Nitrile	8	9	S311GF02N3BC5
	3/32	.21	0	300	130	300	130	300	130	—	—	180	Nitrile	8	9	S311GF02N3BC9
	7/64	.29	0	210	90	210	90	210	90	—	—	180	Nitrile	8	9	S311GF02N3BD3
	1/8	.32	0	155	60	155	60	155	60	—	—	180	Nitrile	8	9	S311GF02N3BD5
	5/32	.43	0	105	35	105	35	105	35	—	—	180	Nitrile	8	9	S311GF02N3BD7
	3/16	.49	0	75	20	75	20	75	20	—	—	180	Nitrile	8	9	S311GF02N3BE1
	1/4	.85	0	50	20	50	20	50	20	—	—	180	Nitrile	8	9	S311GF02N3BE7
9/32	1.0	0	35	15	35	15	35	15	—	—	180	Nitrile	8	9	S311GF02N3BF1	
1/4	1/32	.03	0	2000	2000	2000	2000	2000	2000	—	—	230	Viton	8	9	S311GF02V3BC1
	3/64	.05	0	770	420	770	420	770	420	—	—	230	Viton	8	9	S311GF02V3BC3
	1/16	.10	0	560	185	560	185	560	185	—	—	230	Viton	8	9	S311GF02V3BC5
	5/64	.15	0	400	150	400	150	400	150	—	—	230	Viton	8	9	S311GF02V3BC7
	3/32	.21	0	300	130	300	130	300	130	—	—	230	Viton	8	9	S311GF02V3BC9
	7/64	.29	0	210	90	210	90	210	90	—	—	230	Viton	8	9	S311GF02V3BD3
	1/8	.32	0	155	60	155	60	155	60	—	—	230	Viton	8	9	S311GF02V3BD5
	5/32	.43	0	105	35	105	35	105	35	—	—	230	Viton	8	9	S311GF02V3BD7
	3/16	.49	0	75	20	75	20	75	20	—	—	230	Viton	8	9	S311GF02V3BE1
	1/4	.85	0	50	20	50	20	50	20	—	—	230	Viton	8	9	S311GF02V3BE7
9/32	1.0	0	35	15	35	15	35	15	—	—	230	Viton	8	9	S311GF02V3BF1	

* Class H Coil Recommended for Steam and Other High Temperature Applications

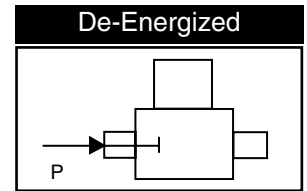
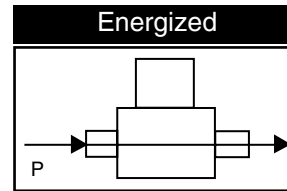
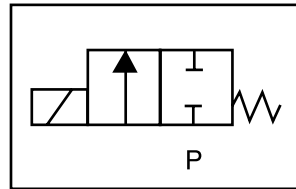
GC Valves Customer Service: 800-828-0484 (7:30am to 4pm ET) or 800-582-4232 (7:30am to 4pm PT)

S311 – 1/4" NPT, Stainless Steel Body, Normally Closed



Valve Selection List

Normally Closed



Pipe Size NPT	Orifice Size in.	C _v	Minimum	Operating Pressure Differential (psi)								Max Fluid Temp. °F	Seal Material	Power Consumption (Watts)		Model Code (120V/60HZ — 110V/50HZ Shown)
				Maximum										AC	DC	
				Air/Gas		Water		Light Oil		Steam*						
				AC	DC	AC	DC	AC	DC	AC	DC			AC	DC	
1/4	1/32	.03	0	2000	2000	2000	2000	2000	2000	150*	150*	366	Rulon	8	9	S311GF02R3BC1
	3/64	.05	0	770	420	770	420	770	420	150*	150*	366	Rulon	8	9	S311GF02R3BC3
	1/16	.10	0	560	185	560	185	560	185	150*	150*	366	Rulon	8	9	S311GF02R3BC5
	5/64	.15	0	400	150	400	150	400	150	150*	150*	366	Rulon	8	9	S311GF02R3BC7
	3/32	.21	0	300	130	300	130	300	130	150*	130*	366	Rulon	8	9	S311GF02R3BC9
	7/64	.29	0	210	90	210	90	210	90	150*	90*	366	Rulon	8	9	S311GF02R3BD3
	1/8	.32	0	155	60	155	60	155	60	150*	60*	366	Rulon	8	9	S311GF02R3BD5
	5/32	.43	0	105	35	105	35	105	35	105*	35*	366	Rulon	8	9	S311GF02R3BD7
	3/16	.49	0	75	20	75	20	75	20	75*	20*	366	Rulon	8	9	S311GF02R3BE1
	1/4	.85	0	50	20	50	20	50	20	50*	20*	366	Rulon	8	9	S311GF02R3BE7
	9/32	1.0	0	35	15	35	15	35	15	35*	15*	366	Rulon	8	9	S311GF02R3BF1
1/4	1/32	.03	0	2000	2000	2000	2000	2000	2000	150*	150*	366	Teflon	8	9	S311GF02T3BC1
	3/64	.05	0	770	420	770	420	770	420	150*	150*	366	Teflon	8	9	S311GF02T3BC3
	1/16	.10	0	560	185	560	185	560	185	150*	150*	366	Teflon	8	9	S311GF02T3BC5
	5/64	.15	0	400	150	400	150	400	150	150*	150*	366	Teflon	8	9	S311GF02T3BC7
	3/32	.21	0	300	130	300	130	300	130	150*	130*	366	Teflon	8	9	S311GF02T3BC9
	7/64	.29	0	210	90	210	90	210	90	150*	90*	366	Teflon	8	9	S311GF02T3BD3
	1/8	.32	0	155	60	155	60	155	60	150*	60*	366	Teflon	8	9	S311GF02T3BD5
	5/32	.43	0	105	35	105	35	105	35	105*	35*	366	Teflon	8	9	S311GF02T3BD7
	3/16	.49	0	75	20	75	20	75	20	75*	20*	366	Teflon	8	9	S311GF02T3BE1
	1/4	.85	0	50	20	50	20	50	20	50*	20*	366	Teflon	8	9	S311GF02T3BE7
	9/32	1.0	0	35	15	35	15	35	15	35*	15*	366	Teflon	8	9	S311GF02T3BF1

* Class H Coil Recommended for Steam and Other High Temperature Applications



S311 – 1/4" NPT, Stainless Steel Body, Normally Closed

Part Numbering

1	2	3	4	5	6	7	8	9	10	11	12	13
S	3	1	1	G	F	0	2	C	3	B	C	1
Series			Operating Mode	Housing*	Coil Class*	Voltage*		Seal Material	Body Material	Pipe Connection	Orifice Size	
S31			1: Normally Closed	G: Conduit	F: Class F H: Class H	02: 120/60 110/50		C: EPR N: Nitrile V: Viton R: Rulon T: Teflon	3: Stainless Steel	B: 1/4" NPT	C1: 1/32" C3: 3/64" C5: 1/16" C7: 5/64" C9: 3/32" D3: 7/64" D5: 1/8" D7: 5/32" E1: 3/16" E7: 1/4" F1: 9/32"	
* See the "Engineering Guide" for additional voltages, variations and options.												

Coil Data

Coil Family	
Type	Size
All	S3

Frequency (Hz)	60	50	
Nominal Power (VA)	Inrush	36	36
	Holding	13	14

GC Valves Customer Service: 800-828-0484 (7:30am to 4pm ET) or 800-582-4232 (7:30am to 4pm PT)