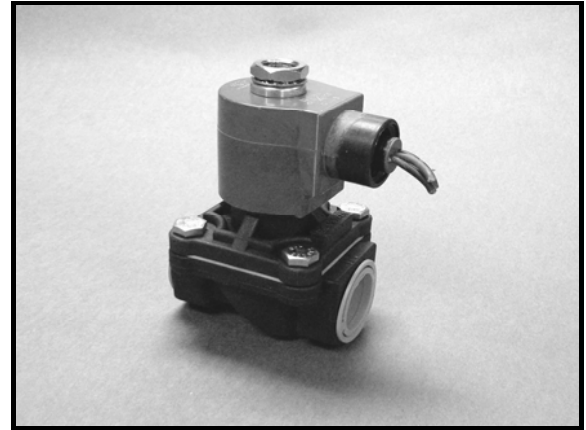


- 3/8" NPT
- Nylon Body
- 2-Way
Piloted Diaphragm
- Normally Open

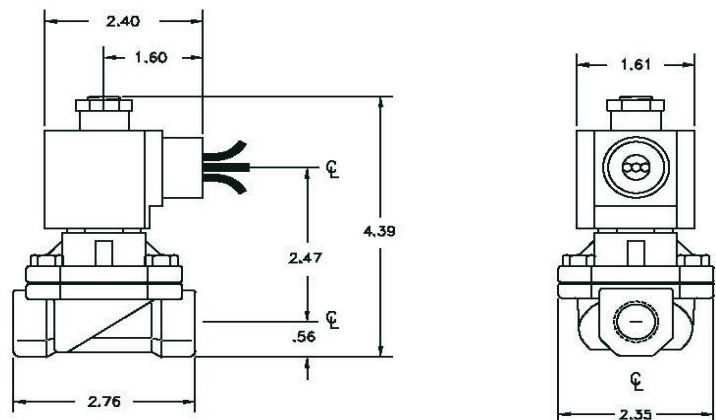


| | | |
|-----------------------|-----------------------|---|
| Materials | Seals: | Santoprene/NSF Approved EPDM |
| | Orifice: | Pilot Main |
| Electrical | Standard Housing: | NEAM 4/4X Encapsulated - 1/2" Conduit |
| | Optional Housings: | Contact GC Valves Customer Service for available options. |
| | Standard Voltages: | 24, 120, 240, AC, 60 and/or 50 Hz. Available 6, 12, 24 DC Contact GC Valves Customer Svc. For Additional Voltages |
| | Voltage Tolerance: | ± 10% of applicable voltage |
| | Coil Classes: | F, H, N |
| | Standard Lead Length: | 24 inches |
| Operating Temperature | Ambient (Nominal): | 32° F to 125° F |
| Mounting | Position: | Any |
| Approvals* | Agency: | NSF/ANSI - 61-G / NSF-372 / UR Recognized |

* Not available for all variations

Dimensions / Weight

| |
|---------------------|
| Weight (oz.) |
| 15.7 |



GC Valves Customer Service: 800-828-0484 (7:30 AM to 5:00 PM ET)

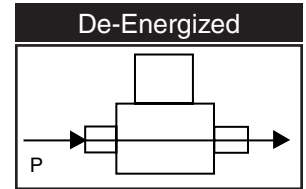
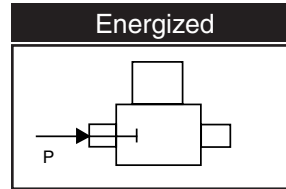
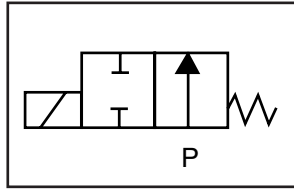
3/8-P-NS212-1



NS212 – 3/8" NPT, Nylon Body, Normally Open

Valve Selection List

Normally Open



| Pipe Size NPT | Orifice Size IN | C _v | Minimum | Operating Pressure Differential (psi) | | | | Max Fluid Temp. °F | Seal Material | Power Consumption (Watts) | | Model Code (120V/60HZ — 110V/50HZ Shown) |
|------------------|--------------------|----------------|---------|---------------------------------------|----|-------|-----|-----------------------|---------------|---------------------------|----|---|
| | | | | Maximum | | | | | | AC | DC | |
| | | | | Air/Gas | | Water | | | | | | |
| | | | | AC | DC | AC | DC | | | Nylon Body | | |
| 3/8 | 5/8 | 3.3 | 3 | - | - | 200 | 125 | 176 | EPR SANTO | 11 | 10 | NS212GF02FPCG4 |

Part Numbering

| | | | | | | | | | | | | | |
|--|----------|----------|----------|------------------|------------|-------------|----------------------|----------|-------------------|---------------|-----------------|--------------|----------|
| 1 | 2 | 3 | 4 | 5 | 6 | 7 | 8 | 9 | 10 | 11 | 12 | 13 | 14 |
| N | S | 2 | 1 | 2 | G | F | 0 | 2 | F | P | C | G | 4 |
| Series | | | | Operating Mode | Housing* | Coil Class* | Voltage* | | Seal Material | Body Material | Pipe Connection | Orifice Size | |
| NS21 | | | | 2: Normally Open | G: Conduit | F: Class F | 02: 120/60 110/50 | | F: SANTO/ EPDM | P: Nylon | C: 3/8" NPT | G4: 5/8" | |
| * See the "Engineering Guide" for additional voltages, variations and options. | | | | | | | | | | | | | |

Coil Data

| Coil Family | |
|-------------|------|
| Type | Size |
| ALL | S4 |

| Frequency (Hz) | 60 | 50 |
|--------------------|---------|----|
| Nominal Power (VA) | Inrush | 46 |
| | Holding | 22 |

GC Valves Customer Service: 800-828-0484 (7:30 am to 5:00 pm ET)