



NS201 Series



Certified to
NSF/ANSI/CAN 61-G & 372

- 3/8" NPT
- 316 SS Body
- 2-Way Zero Differential
Piloted Diaphragm
- Normally Closed

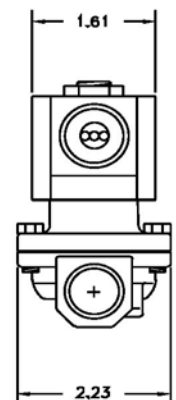
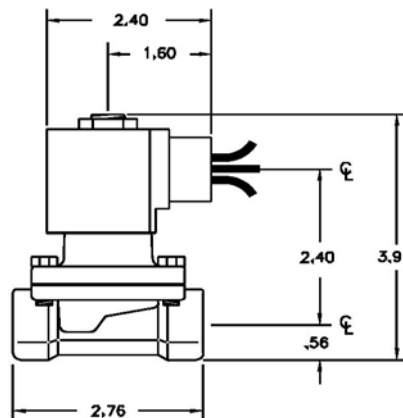


Materials	Seals:	Santoprene/NSF Approved EPDM	
	Orifice:	Pilot	Stainless Steel
		Main	Stainless Steel
Electrical	Housing:	NEMA 4/4X Encapsulated - 1/2" Conduit	
	Optional Housings:	Contact GC Valves Customer Svc. for available options.	
	Voltage:	24,120,240, VAC, 60 and/or 50 Hz. Available. 6, 12, 24 VDC Contact GC Valves Customer Svc. for available options.	
	Voltage Tolerance:	± 10% of applicable voltage	
	Coil Classes:	F, H, N	
	Standard Lead Length:	24 inches	
Operating Temperature	Ambient (Nominal):	32° F to 125° F	
Mounting	Position:	Any	
Approvals*	Agency:	NSF/ANSI - 61-G / NSF-372 / UR Recognized	

* Not available for all variations

Dimensions / Weight

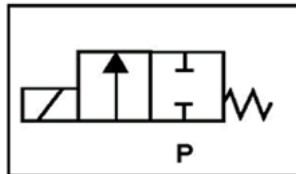
Weight (lbs.)
1.9



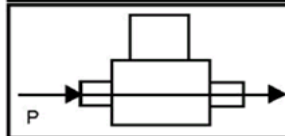
GC Valves Customer Service: 800-828-0484 (7:30 AM to 5:00 PM ET)

Valve Selection List

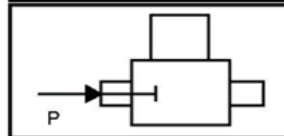
Normally Closed



Energized



De-Energized



Pipe Size	Orifice Size	C _V	Minimum	Operating Pressure Differential (psi)							Max Fluid Temp. °F	Seal Material	Power Consumption (Watts)		Model Code
				Maximum									AC	DC	(120V/60HZ — 110V/50HZ Shown)
				Air/Gas		Water		Light Oil		Steam*					
				AC	DC	AC	DC	AC	DC						
NPT	IN			AC	DC	AC	DC	AC	DC			AC	DC	Stainless Steel Body Type 316	
3/8"	5/8	4.3	0	—	—	100	90	—	—	295	Santo EPR	10	10	NS201GF02F7CG4	

* Class H Coil Recommended for Steam and Other High Temperature Applications

Part Numbering

1	2	3	4	5	6	7	8	9	10	11	12	13	14
N	S	2	0	1	G	F	0	2	F	7	C	G	4
Series				Operating Mode	Housing*	Coil Class*	Voltage*		Seal Material	Body Material	Pipe Connection	Orifice Size	
NS20				1: Normally Closed	G: 1/2" Conduit	F: Class F N: Class N	02: 110/120 50/60 Hz 10 Watt		F: Santoprene/ EPDM	7: S. Steel	C: 3/8"	G4: 5/8"	

Coil Data

Coil Family	
Type	Size
All	S4

Frequency (Hz)		60	50
Nominal Power (VA)	Inrush	46	46
	Holding	18	23

GC Valves Customer Service: 800-828-0484 (7:30 AM to 5:00 PM ET)