



NS211 Series



Certified to
NSF/ANSI/CAN 61-G & 372

- 3/4" NPT
- 316 SS Body
- 2-Way
- Piloted Diaphragm
- Normally Closed

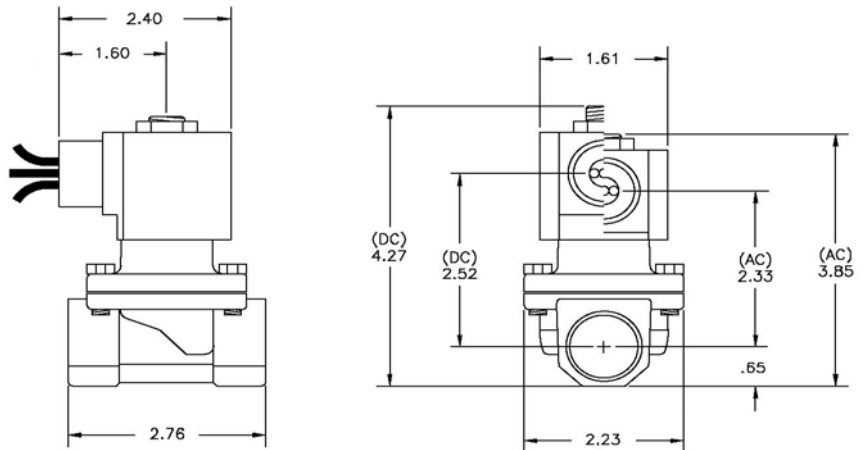


| | | |
|-----------------------|-----------------------|---|
| Materials | Seals: | Santoprene/NSF Approved EPDM |
| | Orifice: | Pilot Main |
| Electrical | Housing: | NEMA 4/4X Encapsulated - 1/2" Conduit |
| | Optional Housings: | Contact GC Valves Customer Svc. for available options. |
| | Voltage: | 24,120,240, VAC, 60 and/or 50 Hz. Available. 6, 12, 24 VDC Contact GC Valves Customer Svc. for available options. |
| | Voltage Tolerance: | ± 10% of applicable voltage |
| | Coil Classes: | F, H, N |
| | Standard Lead Length: | 24 inches |
| Operating Temperature | Ambient (Nominal): | 32° F to 125° F |
| Mounting | Position: | Any |
| Approvals* | Agency: | NSF/ANSI - 61-G / NSF-372 / UR Recognized |

* Not available for all variations

Dimensions / Weight

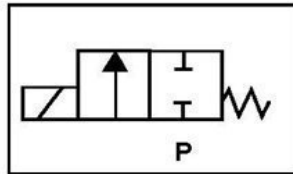
| |
|----------------------|
| Weight (lbs.) |
| 1.9 |



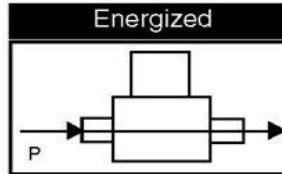
GC Valves Customer Service: 800-828-0484 (7:30 AM to 5:00 PM ET)

Valve Selection List

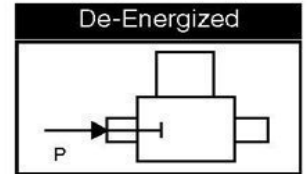
Normally Closed



Energized



De-Energized



| Pipe Size NPT | Orifice Size IN | C _v | Operating Pressure Differential (psi) | | | | | | | Max Fluid Temp. °F | Seal Material | Power Consumption (Watts) | | Model Code (120V/60HZ — 110V/50HZ Shown) | |
|------------------|--------------------|----------------|---------------------------------------|---|-------|-----|-----------|---|--------|--------------------------|---------------|---------------------------|----|--|--|
| | | | Maximum | | | | | | | | | AC | DC | | |
| | | | Air/Gas | | Water | | Light Oil | | Steam* | | | | | | |
| 3/4" | 3/4" | 6.7 | 4 | — | — | 150 | 100 | — | — | — | 295 | Santo EPR | 8 | 10 | Stainless Steel Body Type 316 NS211GF02F7EG5 |

* Class H Coil Recommended for Steam and Other High Temperature Applications

Part Numbering

| | | | | | | | | | | | | | |
|----------|----------|----------|----------|--------------------|-----------------|--------------------------|------------------------------------|----------|------------------------|---------------|-----------------|--------------|----------|
| 1 | 2 | 3 | 4 | 5 | 6 | 7 | 8 | 9 | 10 | 11 | 12 | 13 | 14 |
| N | S | 2 | 1 | 1 | G | F | 0 | 2 | F | 7 | E | G | 5 |
| Series | | | | Operating Mode | Housing* | Coil Class* | Voltage* | | Seal Material | Body Material | Pipe Connection | Orifice Size | |
| NS21 | | | | 1: Normally Closed | G: 1/2" Conduit | F: Class F N: Class N | 02: 110/120 50/60 Hz 10 Watt | | F: Santoprene/ EPDM | 7: S. Steel | E: 3/4" | G5: 3/4" | |

Coil Data

| Coil Family | |
|-------------|------|
| Type | Size |
| AC | S3 |
| DC | S4 |

| Frequency (Hz) | | 60 | 50 |
|--------------------|---------|----|----|
| Nominal Power (VA) | Inrush | 46 | 46 |
| | Holding | 18 | 23 |

GC Valves Customer Service: 800-828-0484 (7:30 AM to 5:00 PM ET)