

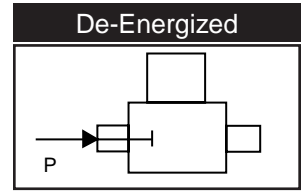
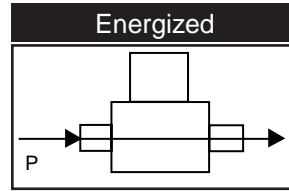
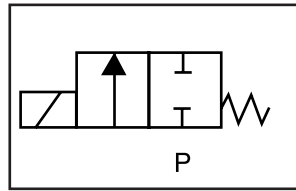




# S201 – □NPT, Nyl Body, Normally Closed

## Valve Selection List

Normally Closed



Pipe Size	Orifice Size	C <sub>v</sub>	Minimum	Operating Pressure Differential (psi)				Max Fluid Temp. °F	Seal Material	Power Consumption (Watts)		Model Code ( 120V/60HZ — 110V/50HZ Shown )
				Maximum						AC	DC	
				AC	DC	AC	DC					1DRQBody
NPT	IN	4.3	0					(30	10	10	1S201GF02CPG4	

## Part Numbering

Series	Operating Mode	Housing*	Coil Class*	Voltage*	Seal Material	Body Material	Pipe Connection	Orifice Size
1S20	1: Normally Closed	G: Conduit ≠ ;1	F: Class F	02: 120/60 110/50	C: (30	P: NylRQ	1/2" NPT	G4: 5/8"

\* See the "Engineering Guide" for additional voltages, variations and options.

## Coil Data

Coil Family	
Type	Size
All	S4

Frequency (Hz)	60	50
Nominal Power (VA)	Inrush	46
	Holding	18

GC Valves Customer Service: 800-828-0484 (7:30am to 4pm ET)