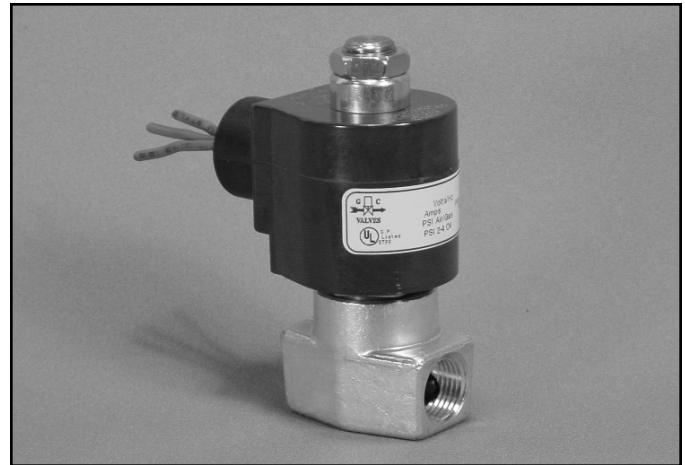


3/8" NPT Brass Body 2-Way Direct Acting Normally Open



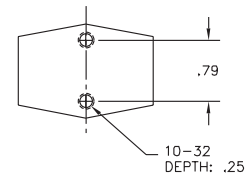
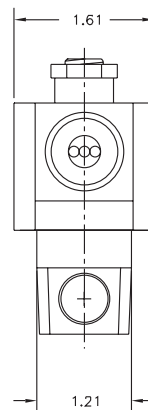
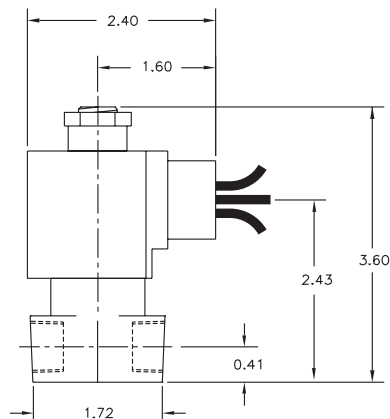
Materials	Seals:	Nitrile, Viton®, Ethylene Propylene, Teflon®, Rulon
	Orifice:	Stainless Steel
Electrical	Standard Housing:	Encapsulated Waterproof Conduit (NEMA 4/4X)
	Optional Housings:	Metallic Conduit, Explosion-proof (NEMA 7), Grommet, Open Frame, Junction Box (single or dual knockouts), DIN; Contact GC Valves Customer Service for others.
	Standard Voltages:	24, 120, 240 AC 60 Hz; 50 Hz available 6, 12, 24 DC; Contact GC Valves Customer Service for Additional Voltages.
	Voltage Tolerance:	±10% of applicable voltage
	Coil Classes:	F, H, N
	Standard Lead Length:	24 inch
Operating Temperature	Ambient (Nominal):	32°F to 125°F
Mounting	Position:	Any
Approvals*	Agency:	UL Listed, UL Recognized, CSA Approved

* Not available for all variations

© Registered Trademark of DuPont Co.

Dimensions/Weight

Weight (lbs.)
1.1



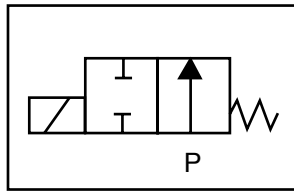
GC Valves Customer Service: 800-828-0484 (7:30am to 4pm ET) or 800-582-4232 (7:30am to 4pm PT)



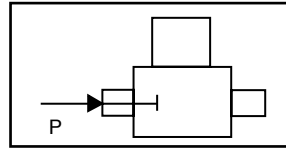
S302 – 3/8" NPT, Brass Body, Normally Open

Valve Selection List

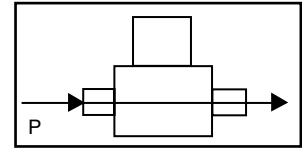
Normally Open



Energized



De-Energized



Pipe Size NPT	Orifice Size in.	C _v	Operating Pressure Differential (psi)								Max Fluid Temp. °F	Seal Material	Power Consumption (Watts)		Model Code (120V/60HZ — 110V/50HZ Shown)	
			Maximum										AC	DC		Brass Body
			Air/Gas		Water		Light Oil		Steam*							
			AC	DC	AC	DC	AC	DC	AC	DC						
3/8	1/8	.30	0	100	100	100	100	—	—	100*	100*	295	EPR	11	10	S302GF02C9CD5
	3/16	.65	0	40	40	40	40	—	—	40*	40*	295	EPR	11	10	S302GF02C9CE1
3/8	1/8	.30	0	100	100	100	100	100	100	—	—	180	Nitrile	11	10	S302GF02N9CD5
	3/16	.65	0	40	40	40	40	40	40	—	—	180	Nitrile	11	10	S302GF02N9CE1
3/8	1/8	.30	0	100	100	100	100	100	100	—	—	230	Viton	11	10	S302GF02V9CD5
	3/16	.65	0	40	40	40	40	40	40	—	—	230	Viton	11	10	S302GF02V9CE1
3/8	1/8	.30	0	100	100	100	100	100	100	100*	100*	366	Rulon	11	10	S302GF02R9CD5
	3/16	.65	0	40	40	40	40	40	40	40*	40*	366	Rulon	11	10	S302GF02R9CE1
3/8	1/8	.30	0	100	100	100	100	100	100	100*	100*	366	Teflon	11	10	S302GF02T9CD5
	3/16	.65	0	40	40	40	40	40	40	40*	40*	366	Teflon	11	10	S302GF02T9CE1

* Class H Coil Recommended for Steam and Other High Temperature Applications

S302 – 3/8" NPT, Brass Body, Normally Open



Part Numbering

1	2	3	4	5	6	7	8	9	10	11	12	13
S	3	0	2	G	F	0	2	C	9	C	D	5
Series			Operating Mode	Housing*	Coil Class*	Voltage*		Seal Material	Body Material	Pipe Connection	Orifice Size	
S30			2: Normally Open	G: Conduit	F: Class F H: Class H	02: 120/60 110/50		C: EPR N: Nitrile V: Viton R: Rulon T: Teflon	9: Forged Brass	C: 3/8" NPT	D5: 1/8" E1: 3/16"	
* See the "Engineering Guide" for additional voltages, variations and options.												

Coil Data

Coil Family	
Type	Size
All	S4

Frequency (Hz)	60	50
Nominal Power (VA)	Inrush	46
	Holding	22



S302 – 3/8" NPT, Brass Body, Normally Open

This Page Intentionally Blank