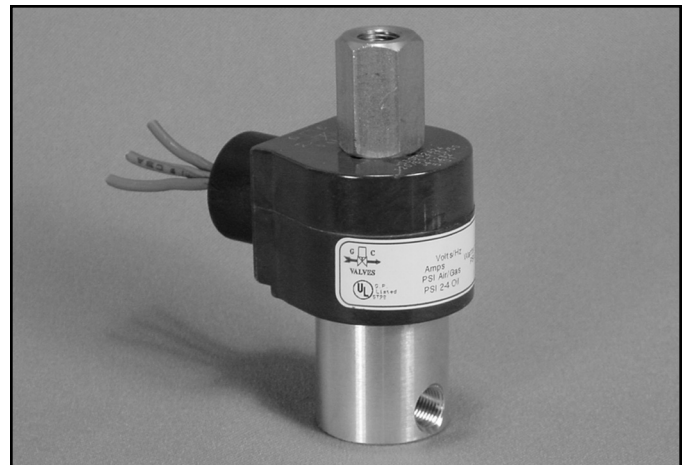


# S31 Series



- 1/8" NPT
- Brass Body
- 3-Way Direct Acting
- Normally Closed



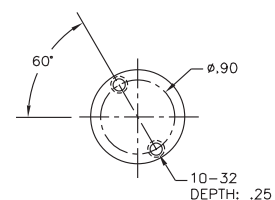
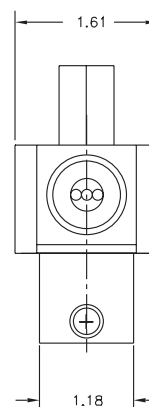
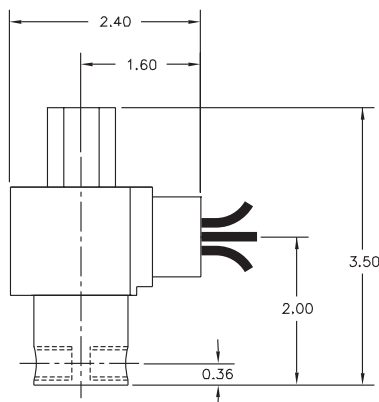
|                       |                            |   |
|-----------------------|----------------------------|---|
| Materials             | Seals:                     | Nitrile, Viton®, Ethylene Propylene or Teflon®  |
|                       | Orifices:      Top<br>Main | Stainless Steel<br>Stainless Steel  |
| Electrical            | Standard Housing:          | Encapsulated Waterproof Conduit (NEMA 4/4X)   |
|                       | Optional Housings:         | Metallic Conduit, Explosion-proof (NEMA 7), Grommet, Open Frame, Junction Box (single or dual knockouts), DIN; Contact GC Valves Customer Service for others. |
|                       | Standard Voltages:         | 24, 120, 240 AC 60 Hz; 50 Hz available<br>6, 12, 24 DC;<br>Contact GC Valves Customer Service for Additional Voltages.  |
|                       | Voltage Tolerance:         | ±10% of applicable voltage  |
|                       | Coil Classes:              | F, H, N   |
|                       | Standard Lead Length:      | 24 inch   |
| Operating Temperature | Ambient (Nominal):         | 32° to 125°F  |
| Mounting              | Position                   | Any   |
| Approvals*            | Agency                     | UL Listed, UL Recognized, CSA Approved  |

\* Not available for all variations

® Registered Trademark of DuPont Co.

## Dimensions/Weight

|                      |
|----------------------|
| <b>Weight (lbs.)</b> |
| 1.0                  |



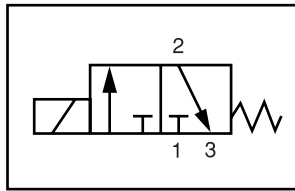
GC Valves Customer Service: 800-828-0484 (7:30am to 4pm ET) or 800-582-4232 (7:30am to 4pm PT)



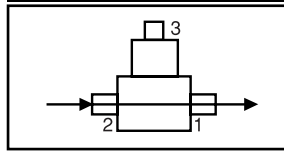
# S313 – 1/8" NPT, Brass Body, Normally Closed

## Valve Selection List

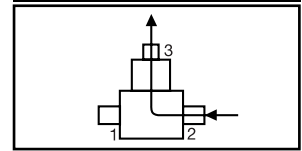
Normally Closed



Energized



De-Energized



| Pipe Size<br>NPT | Orifice Size<br>IN |      | C <sub>v</sub> |     | Operating Pressure Differential (psi) |     |       |     |           |     | Max<br>Fluid Temp.<br>°F | Seal Material | Power<br>Consumption<br>(Watts) |    | Model Code<br>( 120V/60HZ — 110V/50HZ<br>Shown ) |
|------------------|--------------------|------|----------------|-----|---------------------------------------|-----|-------|-----|-----------|-----|--------------------------|---------------|---------------------------------|----|--|
|                  | Main               | Top  | Main           | Top | Maximum                               |     |       |     |           |     |                          |               | AC                              | DC |  |
|                  |                    |      |                |     | Air/Gas                               |     | Water |     | Light Oil |     |                          |               |                                 |    |  |
|                  |                    |      |                |     | AC                                    | DC  | AC    | DC  | AC        | DC  |                          |               |                                 |    |  |
| 1/8              | 3/64               | 1/16 | .05            | .10 | 170                                   | 170 | 170   | 170 | —         | —   | 295                      | EPR           | 8                               | 9  | S313GF02C8AV3                                    |
|                  | 1/16               | 1/16 | .08            | .10 | 120                                   | 120 | 120   | 120 | —         | —   | 295                      | EPR           | 8                               | 9  | S313GF02C8AC5                                    |
|                  | 3/32               | 3/32 | .20            | .20 | 65                                    | 65  | 65    | 65  | —         | —   | 295                      | EPR           | 8                               | 9  | S313GF02C8AC9                                    |
|                  | 1/8                | 3/32 | .27            | .20 | 40                                    | 40  | 40    | 40  | —         | —   | 295                      | EPR           | 8                               | 9  | S313GF02C8AV3                                    |
|                  | 5/32               | 3/32 | .41            | .20 | 25                                    | 25  | 25    | 25  | —         | —   | 295                      | EPR           | 8                               | 9  | S313GF02C8AV7                                    |
| 1/8              | 3/64               | 1/16 | .05            | .10 | 170                                   | 170 | 170   | 170 | 170       | 170 | 180                      | Nitrile       | 8                               | 9  | S313GF02N8AV1                                    |
|                  | 1/16               | 1/16 | .08            | .10 | 120                                   | 120 | 120   | 120 | 120       | 120 | 180                      | Nitrile       | 8                               | 9  | S313GF02N8AC5                                    |
|                  | 3/32               | 3/32 | .20            | .20 | 65                                    | 65  | 65    | 65  | 65        | 65  | 180                      | Nitrile       | 8                               | 9  | S313GF02N8AC9                                    |
|                  | 1/8                | 3/32 | .27            | .20 | 40                                    | 40  | 40    | 40  | 40        | 40  | 180                      | Nitrile       | 8                               | 9  | S313GF02N8AV3                                    |
|                  | 5/32               | 3/32 | .41            | .20 | 25                                    | 25  | 25    | 25  | 25        | 25  | 180                      | Nitrile       | 8                               | 9  | S313GF02N8AV7                                    |
| 1/8              | 3/64               | 1/16 | .05            | .10 | 170                                   | 170 | 170   | 170 | 170       | 170 | 230                      | Viton         | 8                               | 9  | S313GF02V8AV1                                    |
|                  | 1/16               | 1/16 | .08            | .10 | 120                                   | 120 | 120   | 120 | 120       | 120 | 230                      | Viton         | 8                               | 9  | S313GF02V8AC5                                    |
|                  | 3/32               | 3/32 | .20            | .20 | 65                                    | 65  | 65    | 65  | 65        | 65  | 230                      | Viton         | 8                               | 9  | S313GF02V8AC9                                    |
|                  | 1/8                | 3/32 | .27            | .20 | 40                                    | 40  | 40    | 40  | 40        | 40  | 230                      | Viton         | 8                               | 9  | S313GF02V8AV3                                    |
|                  | 5/32               | 3/32 | .41            | .20 | 25                                    | 25  | 25    | 25  | 25        | 25  | 230                      | Viton         | 8                               | 9  | S313GF02V8AV7                                    |
| 1/8              | 3/64               | 1/16 | .05            | .10 | 170                                   | 170 | 170   | 170 | 170       | 170 | 366*                     | Teflon        | 8                               | 9  | S313GF02T8AV1                                    |
|                  | 1/16               | 1/16 | .08            | .10 | 120                                   | 120 | 120   | 120 | 120       | 120 | 366*                     | Teflon        | 8                               | 9  | S313GF02T8AC5                                    |
|                  | 3/32               | 3/32 | .20            | .20 | 65                                    | 65  | 65    | 65  | 65        | 65  | 366*                     | Teflon        | 8                               | 9  | S313GF02T8AC9                                    |
|                  | 1/8                | 3/32 | .27            | .20 | 40                                    | 40  | 40    | 40  | 40        | 40  | 366*                     | Teflon        | 8                               | 9  | S313GF02T8AV3                                    |
|                  | 5/32               | 3/32 | .41            | .20 | 25                                    | 25  | 25    | 25  | 25        | 25  | 366*                     | Teflon        | 8                               | 9  | S313GF02T8AV7                                    |

\* Class H Coil Recommended for High Temperature Applications

GC Valves Customer Service: 800-828-0484 (7:30am to 4pm ET) or 800-582-4232 (7:30am to 4pm PT)

# S313 – 1/8" NPT, Brass Body, Normally Closed



## Part Numbering

|  |          |          |                    |            |             |                      |          |   |               |                 |  |          |
|--|----------|----------|--------------------|------------|-------------|----------------------|----------|---|---------------|-----------------|--|----------|
| 1  | 2        | 3        | 4                  | 5          | 6           | 7                    | 8        | 9   | 10            | 11              | 12   | 13       |
| <b>S</b>   | <b>3</b> | <b>1</b> | <b>3</b>           | <b>G</b>   | <b>F</b>    | <b>0</b>             | <b>2</b> | <b>C</b>                                      | <b>8</b>      | <b>A</b>        | <b>V</b>   | <b>1</b> |
| Series   |          |          | Operating Mode     | Housing*   | Coil Class* | Voltage*             |          | Seal Material                                 | Body Material | Pipe Connection | Orifice Size (Main x Top)  |          |
| S31  |          |          | 3: Normally Closed | G: Conduit | F: Class F  | 02: 120/60<br>110/50 |          | C: EPR<br>N: Nitrile<br>V: Viton<br>T: Teflon | 8: Brass      | A: 1/8" NPT     | V1: 3/64" x 1/16"<br>C5: 1/16" x 1/16"<br>C9: 3/32" x 3/32"<br>V3: 1/8" x 3/32"<br>V7: 5/32" x 3/32" |          |
| * See the "Engineering Guide" for additional voltages, variations and options. |          |          |                    |            |             |                      |          |   |               |                 |  |          |

## Coil Data

| Coil Family |      |
|-------------|------|
| Type        | Size |
| All         | S3   |

|                    |         |    |
|--------------------|---------|----|
| Frequency (Hz)     | 60      | 50 |
| Nominal Power (VA) | Inrush  | 36 |
|                    | Holding | 16 |



## **S313 – 1/8" NPT, Brass Body, Normally Closed**

**This Page Intentionally Blank**