



# SC31 Series



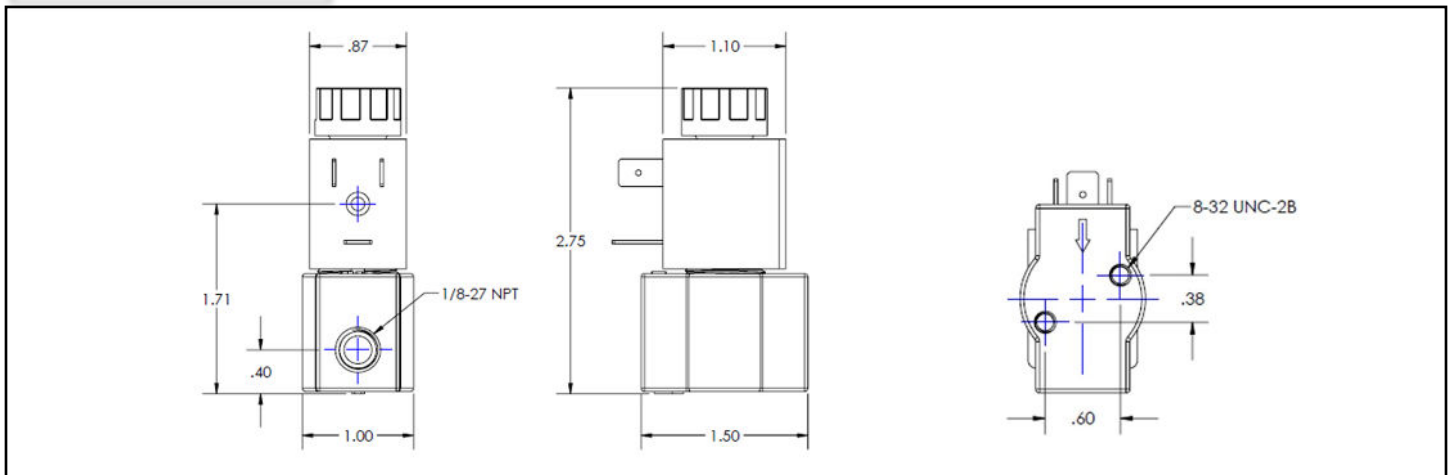
**1/8" NPT  
Nylon Body  
2-Way Direct Acting  
Normally Open**



Materials	Seals:	FKM, EPDM, Nitrile
	Orifice:	Stainless Steel
Electrical	Standard Housing:	DIN 43650 Form B
	Optional Housings:	18" Leads
	Standard Voltages:	24, 120, 240AC 60Hz; 50Hz available; 12, 24 DC; Contact GC Valves Customer Service for Additional Voltages.
	Voltage Tolerance:	±10% of applicable voltage
	Coil Class:	H
Operating Temperature	Ambient (Nominal):	32°F to 125°F
Mounting	Position:	Any
Approvals*	Agencies:	cURus, CE

\*Not Available for all variations

## Dimensions



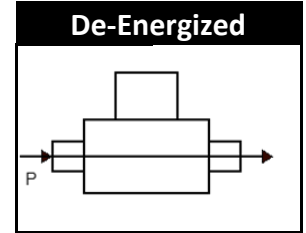
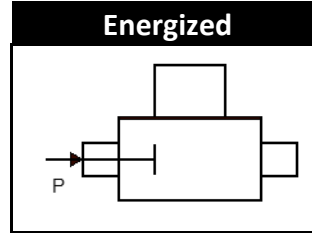
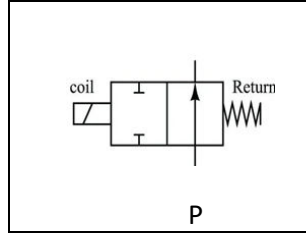


# SC312-1/8" NPT, Nylon Body, Normally Open



## Valve Selection List

Normally Open



Pipe Size	Orifice Size	Cv	Min.	Operating Pressure Differential (PSI)				Max. Fluid Temp. °F	Seal Material	Power Consumption		Model Code (24V/60HZ - DIN) Shown Nylon Body
				Maximum						AC	DC	
				Air/Gas		Water						
NPT	mm.			AC	DC	AC	DC		AC	DC		
1/8	1.2	0.028	0	203	203	203	203	176	FKM	6.5	4	SC312YN24VIAA2
	1.6	0.049	0	145	145	145	145	176	FKM	6.5	4	SC312YN24VIAA3
	2.0	0.065	0	95	95	95	95	176	FKM	6.5	4	SC312YN24VIAA4
	2.4	0.086	0	55	55	55	55	176	FKM	6.5	4	SC312YN24VIAA5
1/8	1.2	0.028	0	203	203	203	203	176	EPDM	6.5	4	SC312YN24CIAA2
	1.6	0.049	0	145	145	145	145	176	EPDM	6.5	4	SC312YN24CIAA3
	2.0	0.065	0	95	95	95	95	176	EPDM	6.5	4	SC312YN24CIAA4
	2.4	0.086	0	55	55	55	55	176	EPDM	6.5	4	SC312YN24CIAA5
1/8	1.2	0.028	0	203	203	203	203	176	NITRILE	6.5	4	SC312YN24NIAA2
	1.6	0.049	0	145	145	145	145	176	NITRILE	6.5	4	SC312YN24NIAA3
	2.0	0.065	0	95	95	95	95	176	NITRILE	6.5	4	SC312YN24NIAA4
	2.4	0.086	0	55	55	55	55	176	NITRILE	6.5	4	SC312YN24NIAA5



# SC312-1/8" NPT, Nylon Body, Normally Open



## Part Numbering

1	2	3	4	5	6	7	8	9	10	11	12	13	14
<b>S</b>	<b>C</b>	<b>3</b>	<b>1</b>	<b>2</b>	<b>Y</b>	<b>N</b>	<b>2</b>	<b>4</b>	<b>V</b>	<b>I</b>	<b>A</b>	<b>A</b>	<b>3</b>
Series			Stations	Operating Mode	Housing	Coil	Voltage		Seal Material	Body Material	Pipe Size	Orifice Size	
C3 Direct Acting NPT Threads Plastic Body			1	2: 2Way N.O.	Y: DIN G: Leads	N: H Class	02: 120/60 04: 240/60 24: 24/60 15: 12 VDC 16: 24 VDC		V: FKM C: EPDM N: NITRILE	I: Nylon	A: 1/8"	A2: 1.2mm <b>A3: 1.6mm</b> A4: 2.0mm A5: 2.4mm	

## Coil Data

AC Coil Family	
Voltage Code	Coil Number
YN02	C944
GN02	C944L
YN04	C802
GN04	C802L
YN24	C987
GN24	C987L

DC Coil Family	
Voltage Code	Coil Number
YN15	C999
GN15	C999L
YN16	C926
GN16	C926L

## Kit Data

Operator	
Seal	Part Number
V	KSC3202VDA5
C	KSC3202CDA5
N	KSC3202NDA5