



# Solenoid Valves For the Energy Sector

GC Valves has a diverse lineup of valves and manifolds for multiple segments in the energy sector, such as conventional oil and gas, as well as hydrogen and other alternative fuel production operations. We offer a variety of valve options to accommodate a diverse range of applications. Our extensive lineup of stainless steel valves are easily paired with Viton seals for improved chemical compatibility and heat tolerance over traditional materials. GC Valves also offers explosion-proof housings with 1/2" conduit hub connections. GC Valves explosion-proof housings are approved for Class I Groups C, and D, Class II Groups E, F, and G, Division 1 & 2 environments.

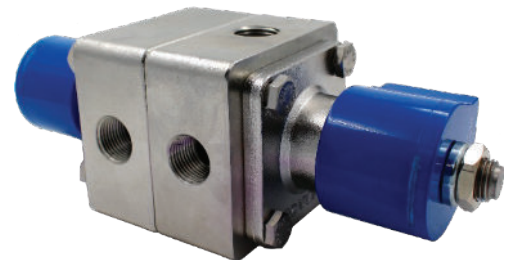
## Valve Design Features

- Body materials include brass, stainless steel
- Pipe sizes ranging from 1/8" to 2" NPT
- Pressure ratings up to 2400 PSI for water/air and 150 PSI for steam
- NSF/ANSI/CAN 61 options available
- UL, CSA, and CE approved coil options
- Seal materials include FKM, Nitrile, EPDM, PTFE, and other elastomers
- Conduit, Explosion Proof, DIN, and Junction Box housing options
- Zero pressure differential valve operation options



## Manifold Design Features

- Pipe sizes include 1/8" to 3/4" NPT
- Available in multiple sizes to suit your exact needs
- Reduces the number of plumbing connections, simplifies installation
- Standard body material: Brass, Stainless Steel
- Optional materials: Aluminum, PVC, other thermoplastics, plating available
- Reverse manifolds, normally open operator, and 3-way options are available



# CUSTOM SOLUTIONS



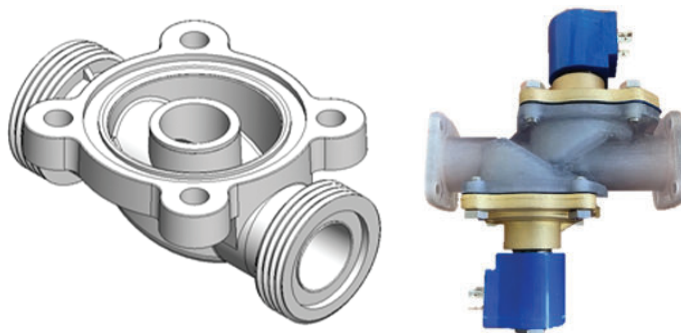
We produce over 1.5 million solenoid valves annually. GC Valves has a history of tailoring solutions for OEMs with demanding applications. Whether you need to design around temperature, pressure, chemical compatibility, flow, or reliability, GC Valves can provide a fluid control solution to meet your needs.

Our world-class engineering team and product portfolio allow for custom solutions in a wide variety of applications. The valves shown here are a small portion of our offering and just a hint of what we can provide with regards to custom valves. Our long history of collaborating with OEMs gives us the experience and comfort level needed to solve difficult design challenges. We pride ourselves on making cost-effective custom solutions, understanding the demands of manufacturers, and providing our products on time, tested, and of the highest quality.

## ENGINEERING CAPABILITIES

### 3D Modeling and 3D Printing - Rapid Prototypes

- STEP files
- Solidworks part
- ACIS
- Pro/E and Creo part
- Parasolid files
- IGES files and more!
- Quick delivery time
- Multiple materials
- Fitment check
- Low-pressure fluid testing
- Tangible design



### Sales Drawings

- Basic views
- Overall dimensions
- Specifications

### Test Reports

- Professional reports
- Certified results
- Data-driven decisions

### Testing Capabilities

- Burst testing
- Noise
- Flow
- Torque
- Water hammer
- Life cycle
- Heat Rise and
- Hi-Pot (High Potential)
- Maximum operating pressure differential
- Minimum opening pressure
- Chemical compatibility
- Internal and External leakage



### GC Valves, LLC

456 Crompton Street  
Charlotte, NC 28273

Tel: 800-828-0484

 [gcvales.com](http://gcvales.com)

 [sales@GCValves.com](mailto:sales@GCValves.com)