



- 1/8" NPT
- 303 Stainless Steel Body
- 2-Way Zero Differential
- Direct Acting
- Normally Closed

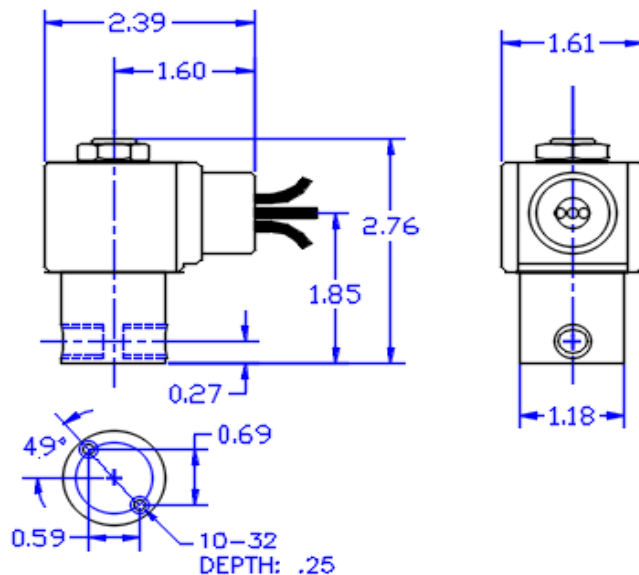


Materials	Seals:	NSF Approved Ethylene Propylene
	Orifice:	Stainless Steel
Electrical	Standard Housing:	Encapsulated Waterproof Conduit (NEMA 4X)
	Optional Housings:	Metal Conduit, Explosion-Proof (NEMA 7), Grommet Open Frame, Junction Box (single or dual knockouts), DIN, Contact GC Valves Customer Svc. For others.
	Standard Voltages:	24, 120, 240, AC, 60 and/or 50 Hz. Available 6, 12, 24 DC Contact GC Valves Customer Svc. For Additional Voltages
	Voltage Tolerance:	± 10% of applicable voltage
	Coil Classes:	F, H, N
	Standard Lead Length:	24 inches
Operating Temperature	Ambient (Nominal):	32° F to 125° F
Mounting	Position:	Any
Approvals*	Agency:	NSF/ANSI - 61/ NSF-372/ UR -CSA Recognized

\* Not available for all variations

## Dimensions / Weight

<b>Weight (Lbs.)</b>
1



GC Valves Customer Service: 800-828-0484 (7:30 AM to 5:00 PM ET)

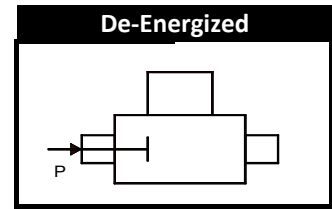
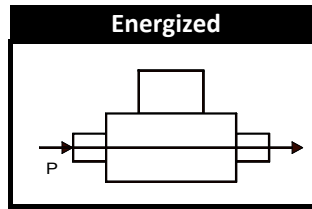
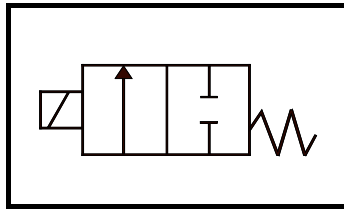
1-8-S-NS311-1



# NS311 - 1/8" NPT, Stainless Steel Body, Normally Closed

## Valve Selection List

**Normally Closed**



Pipe Size	Orifice Size	Cv	Operating Pressure Differential (PSI)								Max. Fluid Temp. °F	Seal Material	Power Consumption (Watts)		Model Code (120V/60HZ-110V/50HZ) Shown	
			Minimum	Maximum									AC	DC		
				Air/Gas		Water		Light Oil		Steam*						
NPT	In.			AC	DC	AC	DC	AC	DC	AC	DC			AC	DC	Stainless Steel Body
1/8	1/32	.03	0	2000	2000	2000	2000	---	---	50	50	295	EPR	8	9	NS311GF02C2AC1
	3/64	.05	0	770	420	770	420	---	---	50	50	295	EPR	8	9	NS311GF02C2AC3
	1/16	.10	0	560	185	560	185	---	---	50	50	295	EPR	8	9	NS311GF02C2AC5
	5/64	.15	0	400	150	400	150	---	---	50	50	295	EPR	8	9	NS311GF02C2AC7
	3/32	.21	0	300	130	300	130	---	---	50	50	295	EPR	8	9	NS311GF02C2AC9
	7/64	.29	0	210	90	210	90	---	---	50	50	295	EPR	8	9	NS311GF02C2AD3
	1/8	.36	0	155	60	155	60	---	---	50	50	295	EPR	8	9	NS311GF02C2AD5
	5/32	.44	0	105	35	105	35	---	---	50	35	295	EPR	8	9	NS311GF02C2AD7
	3/16	.65	0	75	20	75	20	---	---	50	20	295	EPR	8	9	NS311GF02C2AE1
1/4	.85	0	35	15	35	15	---	---	35	15	295	EPR	8	9	NS311GF02C2AE7	
9/32	1.0	0	20	10	20	10	---	---	20	10	295	EPR	8	9	NS311GF02C2AF1	

## Part Numbering

1	2	3	4	5	6	7	8	9	10	11	12	13
<b>NS</b>	<b>3</b>	<b>1</b>	<b>1</b>	<b>G</b>	<b>F</b>	<b>0</b>	<b>2</b>	<b>C</b>	<b>2</b>	<b>A</b>	<b>C</b>	<b>9</b>
Series			Operating Mode	Hsg	Coil	Voltage		Seal Mat'l	Body Mat'l	Pipe Size	Orifice Size	
NS31			1: N.C.	G: Conduit Y: DIN A: Conduit U: J-Box P: Opn Frame	F: F Class H: H Class	02: 120/60 110/50 04: 240/60 220/50 24: 24/60 24/50 15: 12 VDC 16: 24 VDC		C: EPDM	2: 303 SS	A: 1/8"	See Above	

## Coil Data

Coil Family	
Type	Size
All	S3

Frequency (Hz)	60	50
Nominal Power (VA)	Inrush	36
	Holding	13

GC Valves Customer Service: 800-828-0484 (7:30 AM to 5:00 PM ET)