



- 1 1/2" NPT
- 316 Stainless Steel Body
- 2-Way Zero Differential
Piloted Diaphragm
- Normally Closed

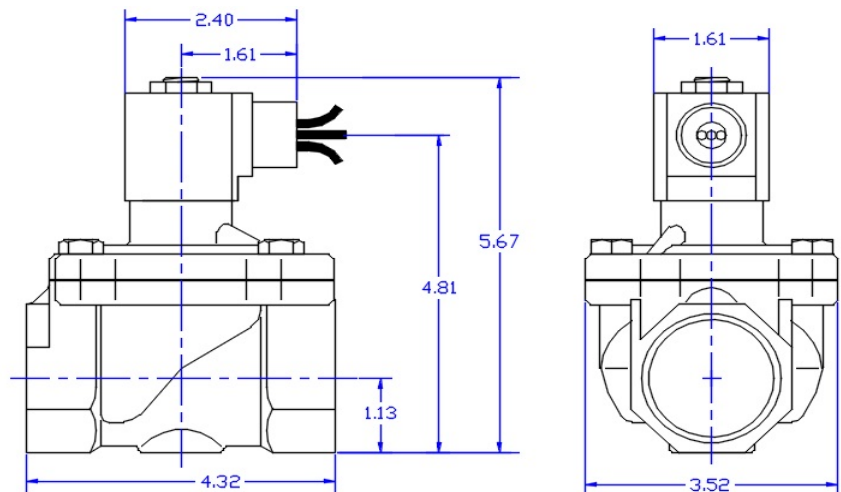


| | | |
|-----------------------|-----------------------|--|
| Materials | Seals: | NSF Approved Ethylene Propylene |
| | Orifice: | Stainless Steel |
| Electrical | Standard Housing: | Encapsulated Waterproof Conduit (NEMA 4X) |
| | Optional Housings: | Metal Conduit, Explosion-Proof (NEMA 7), Grommet Open Frame, Junction Box (single or dual knockouts), DIN, Contact GC Valves Customer Svc. For others. |
| | Standard Voltages: | 24, 120, 240, AC, 60 and/or 50 Hz. Available 6, 12, 24 DC Contact GC Valves Customer Svc. For Additional Voltages |
| | Voltage Tolerance: | ± 10% of applicable voltage |
| | Coil Classes: | F, H, N |
| | Standard Lead Length: | 24 inches |
| Operating Temperature | Ambient (Nominal): | 32° F to 125° F |
| Mounting | Position: | Upright and Vertical |
| Approvals* | Agency: | NSF/ANSI - 61/ NSF-372/ UR -CSA Recognized |

* Not available for all variations

Dimensions / Weight

| |
|----------------------|
| Weight (Lbs.) |
| 6.1 |



GC Valves Customer Service: 800-828-0484 (7:30 AM to 5:00 PM ET)

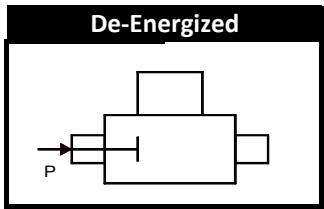
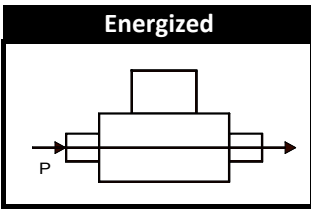
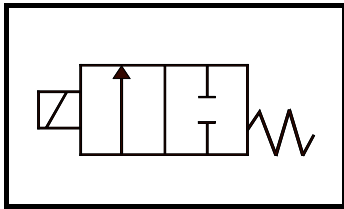
1.5-S-NS201-1



NS201 - 1 1/2" NPT, Stainless Steel Body, Normally Closed

Valve Selection List

Normally Closed



| Pipe Size | Orifice Size | Cv | Operating Pressure Differential (PSI) | | | | | | | | Max. Fluid Temp. °F | Seal Material | Power Consumption (Watts) | | Model Code (120V/60HZ-110V/50HZ) Shown | |
|-----------|--------------|----|---------------------------------------|---------|-----|-------|-----|-----------|-----|--------|------------------------|---------------|---------------------------|----|--|----------------|
| | | | Minimum | Maximum | | | | | | | | | AC | DC | Stainless Steel Body | |
| | | | | Air/Gas | | Water | | Light Oil | | Steam* | | | | | | |
| NPT | In. | | 0 | AC | DC | AC | DC | AC | DC | AC | DC | 295 | EPR | 10 | 10 | NS201GF02C7HJ2 |
| 1 1/2 | 1 1/4 | 25 | 0 | 100 | 100 | 100 | 100 | --- | --- | 50 | 50 | | | | | |

Part Numbering

| | | | | | | | | | | | | |
|-----------|----------|----------------|---|--------------------------|---|----------|----------|------------|------------|-----------|--------------|----------|
| 1 | 2 | 3 | 4 | 5 | 6 | 7 | 8 | 9 | 10 | 11 | 12 | 13 |
| NS | 2 | 0 | 1 | G | F | 0 | 2 | C | 7 | H | J | 2 |
| Series | | Operating Mode | Hsg | Coil | Voltage | | | Seal Mat'l | Body Mat'l | Pipe Size | Orifice Size | |
| NS20 | | 1: N.C. | G: Conduit Y: DIN A: Conduit U: J-Box P Opn Frame | F: F Class H: H Class | 02: 120/60 110/50 04: 240/60 220/50 24: 24/60 24/50 15: 12 VDC 16: 24 VDC | | | C: EPDM | 7: 316 SS | H: 1 1/2" | J2: 1 1/4" | |

Coil Data

| Coil Family | |
|-------------|------|
| Type | Size |
| All | S4 |

| Frequency (Hz) | | 60 | 50 |
|--------------------|---------|----|----|
| Nominal Power (VA) | Inrush | 46 | 46 |
| | Holding | 18 | 19 |

GC Valves Customer Service: 800-828-0484 (7:30 AM to 5:00 PM ET)